

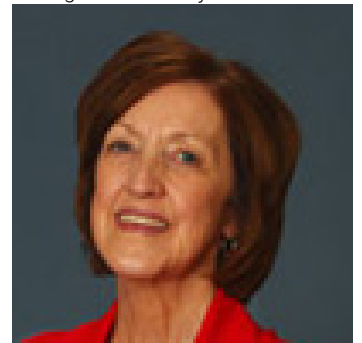


0 226 Avenue Rural Foothills County Alberta

\$975,000

Lovely 33.5-acre parcel of land approx. 7 minutes south of the Hamlet of Priddis and about 20 minutes to the south area of Calgary! Located off the Old Coal Mine Road within the beautiful Priddis area of the Foothills County, you can enjoy loads of space and privacy with plenty of room to build your dream home, enjoy quiet surroundings, night star gazing etc. Access is from a hardtop MD road providing a quick and easy commute. With a mixed landscape of pleasant clusters of trees and open pastoral and grazing portions, there are various options for building sites and usage. Until you build you have the option to come to the land and just enjoy the serenity of your own "get away" country lot. The location is about 15 minutes to the new Calgary South-West Ring Road allowing fast access to the city and numerous amenities in the south Calgary area, is minutes to the Priddis Golf & Country Club and about 14 minutes west to charming Bragg Creek. New approach recently created to the property on the east side off 226 Ave., and new well drilled. With the additional approach there are 2 options for access to the property. (id:6769)

Listing Presented By:



Originally Listed by:
Royal LePage Solutions

<http://www.chaulkrealstate.com/>



CIR

REALTY

149 West Lakeview Point , Calgary,
AB,

Phone: 403-585-5270
cawarawa@shaw.ca