



# 103 Scandia Bay Calgary Alberta

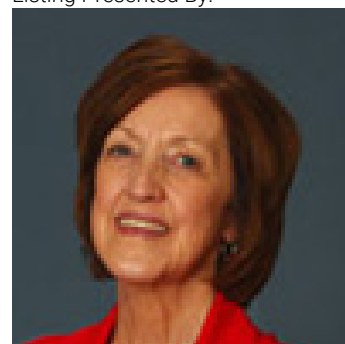
\$980,000

Nestled in the desirable Scenic Acres neighborhood, this newly renovated residence presents a rare blend of luxury and functionality, complemented by a triple attached garage/RV parking and expansive driveway. The dramatic open-concept living and dining area features vaulted ceilings and a skylight, setting the tone for sophistication. Luxury vinyl plank flooring flows throughout the main and upper levels, while the thoughtful floorplan seamlessly integrates formal and informal spaces. The gourmet kitchen boasts quartz countertops, professional-grade appliances, and soft-close cabinets, adjacent to a cozy family room with fireplace. A versatile in-home office/bedroom and convenient laundry facilities and full bath enhance the main level. The upper level showcases a serene primary retreat with walk-in closet and spa-inspired four-piece ensuite, accompanied by three generous bedrooms and a four-piece bathroom. The partially finished basement adds two additional bedrooms. This meticulously updated property boasts an impressive array of new features, including flooring, lighting, hot water tank, furnaces, electrical components, water pipes, exterior stucco, and painting. Located mere moments from urban amenities, schools, parks, shopping centres, and recreational facilities, this exceptional residence offers the ultimate in comfort and style. (id:6769)

Primary Bedroom 16.58 Ft x 14.67 Ft  
Bedroom 10.25 Ft x 10.00 Ft  
Bedroom 9.92 Ft x 11.83 Ft  
Bedroom 9.92 Ft x 11.83 Ft  
5pc Bathroom 8.25 Ft x 11.83 Ft  
4pc Bathroom 4.92 Ft x 8.75 Ft  
Bedroom 9.50 Ft x 14.08 Ft

Bedroom 12.33 Ft x 11.92 Ft  
Dining room 14.25 Ft x 9.83 Ft  
Family room 15.17 Ft x 15.00 Ft  
Kitchen 13.83 Ft x 21.08 Ft  
Living room 13.83 Ft x 21.08 Ft  
Office 10.08 Ft x 9.58 Ft  
4pc Bathroom 8.42 Ft x 8.25 Ft

Listing Presented By:



Originally Listed by:  
CIR Realty



CIR

REALTY

149 West Lakeview Point , Calgary, AB,

Phone: 403-585-5270  
cawarawa@shaw.ca