



145 Burma Star Road Calgary Alberta

\$515,000

Situated on the 4th floor of this fantastic building, you are invited into this spacious 2 bedroom + den layout with west view overlooking the homes of Currie Barracks and treated to mountain views. The interior finishes of this home are exceptional. and offer 18 foot ceilings that create a dramatic and open feeling with massive windows that allow the natural light to pour in. The kitchen is thoughtfully laid out with ample counter space, full height cabinetry, central island with sink + space to accommodate bar stools and quartz counters. The adjacent living room invites you to sit and enjoy the space and light. A quiet den is perfect for a home office or yoga space. The Primary bedroom offers walk-through closets leading into the ensuite counter, upgraded with 2 sinks, floor tile & oversized shower. The Second bedroom located on opposite side of unit has a 4 pc bathroom connected to bedroom with a cheater door for guests, a walk through closet and west views. The patio offers a retreat for you morning coffee and has a gas line for BBQ. This home comes with and oversized heated secured underground titled parking, additional storage space at the parking spot & bike storage. The Armory is located in the historic community of Currie Barracks, this central location has amenities close by with restaurants, walking paths, parks and green spaces and a 10 minute commute to downtown. This home offers the additional convenience of In floor heat + central AC cooling! Come and see for yourself all this home and Currie Barracks has to offer. (id:6769)

Living room 13.58 Ft x 12.00 Ft

Dining room 5.58 Ft x 4.50 Ft

Bedroom 11.00 Ft x 10.08 Ft

Primary Bedroom 12.08 Ft x 10.17 Ft

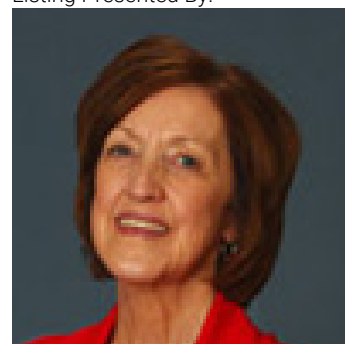
Kitchen 10.08 Ft x 10.00 Ft

Den 7.83 Ft x 7.58 Ft

4pc Bathroom 10.00 Ft x 8.58 Ft

4pc Bathroom 10.33 Ft x 4.83 Ft

Listing Presented By:



Originally Listed by:
BABYCH GROUP CENTRAL



CIR

REALTY

149 West Lakeview Point , Calgary, AB,

Phone: 403-585-5270
cawarawa@shaw.ca