

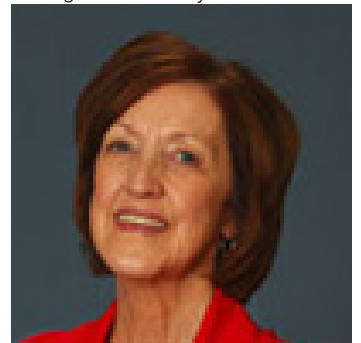


1825 92 Street Calgary Alberta

\$4,352,000

15.27 acres of raw farmland zoned SFUD2 (Medium Term- Farmland). Located 650 ft south of 17 AV and having an east border (of 652 ft) along 92 St in the Belvedere ASP. This corridor of 17 av hosts the rapidly developing area of Belvedere. Increased traffic and exposure combined with easy access to the area will benefit future commercial and residential developments. With all necessary servicing along 17th Av, this is an ideal opportunity to secure a mid-term development opportunity in a built area, where unencumbered land is hard to discover. This parcel is separated from 17 Av by a 10 acre parcel which fronts and is accessed from 17 Av (also currently listed for sale for a combined 25 acres) Take advantage of the proposed transit routes, residential and commercial expansion, and an increase in infrastructure. Belvedere is one of the most desirable new areas for builders and consumers alike! (id:6769)

Listing Presented By:



Originally Listed by:
REAL BROKER

<http://www.sanostante.com/>



CIR

REALTY

149 West Lakeview Point , Calgary,
AB,

Phone: 403-585-5270
cawarawa@shaw.ca