



# 28 Bermondsey Rise Calgary Alberta

\$599,900

Check out the 3D Tour! Welcome to your dream home in the desirable and central community of Beddington Heights! This beautifully updated two storey home backs onto a green space/walking path that leads to Nose Hill Park and Beddington Town Centre! As you step inside, you'll be welcomed by a bright and airy living room with soaring vaulted ceilings. The formal dining room flows seamlessly into a stunning kitchen featuring dark-stained cabinets, a stylish brick backsplash, stainless steel appliances, and a large sink with a restaurant-style faucet. In the back, there is a spacious family room with a gas fireplace. A updated 2-piece powder room completes the main floor. Upstairs, you'll find three generously sized bedrooms, including a primary retreat with a 3-piece ensuite and walk-in closet. The renovated bathroom features a tile-surround walk-in shower and double vanities. The developed basement offers a large bedroom, a full bathroom, full summer/spice kitchen and a den/office space. Updates include new garage door, new flooring in some areas, newer roof, siding, furnace, washer & dryer, and windows. The beautifully landscaped yard adds to the charm, and a single attached garage provides extra convenience. Come see this exceptional family home today--it's a must-visit! (id:6769)

Bedroom 19.67 Ft x 11.75 Ft

Other 10.42 Ft x 9.25 Ft

3pc Bathroom Measurements not available

Office 10.25 Ft x 8.08 Ft

Living room 13.75 Ft x 13.33 Ft

Dining room 10.50 Ft x 10.42 Ft

Kitchen 16.75 Ft x 8.42 Ft

Family room 19.33 Ft x 10.92 Ft

2pc Bathroom Measurements not available

Primary Bedroom 13.92 Ft x 11.25 Ft

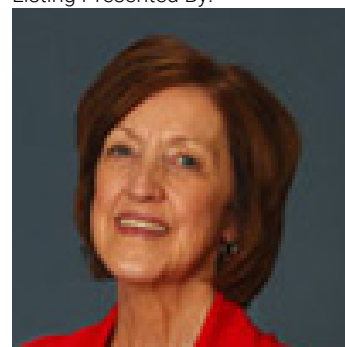
Bedroom 10.75 Ft x 8.25 Ft

Bedroom 10.25 Ft x 7.92 Ft

3pc Bathroom Measurements not available

4pc Bathroom Measurements not available

Listing Presented By:



Originally Listed by:  
RE/MAX Real Estate (Mountain View)

<http://knrealestate.ca/>



CIR

REALTY

149 West Lakeview Point , Calgary, AB,

Phone: 403-585-5270  
cawarawa@shaw.ca