



32 Treeline Manor Calgary Alberta

\$699,900

Discover 32 Treeline Manor SW, a brand-new home in Alpine Park. The AMERY model offers 1,656 sq ft of living space with a rear double detached garage. The craftsman-style exterior features Hardie board siding and a oversized front porch. Inside, the open concept design includes LVP flooring on the main floor and quartz countertops throughout. The kitchen shines with white HDF cabinetry, soft-close features, upgraded stainless steel appliances, a chimney hood fan, a large island, and a window over the sink. An integrated home office and walk-in pantry are conveniently located off the kitchen. The great room at the front of the home has large windows facing the street. Alpine Park is an ambitious next-generation community in Calgary's new west, known for its new urbanist principles and spectacular parks. Photos are representative. (id:6769)

2pc Bathroom .00 Ft x .00 Ft

5pc Bathroom .00 Ft x .00 Ft

Dining room 9.00 Ft x 13.17 Ft

Family room 13.00 Ft x 15.17 Ft

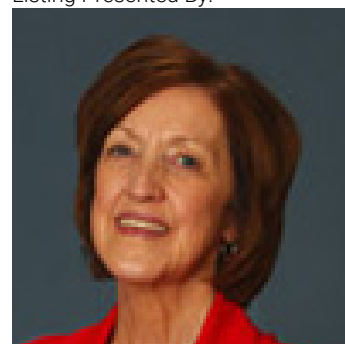
Primary Bedroom 10.83 Ft x 14.01 Ft

4pc Bathroom Measurements not available

Bedroom 9.33 Ft x 12.00 Ft

Bedroom 9.33 Ft x 12.00 Ft

Listing Presented By:



Originally Listed by:
Bode Platform Inc.

<http://www.bodecanada.com/>



CIR

REALTY

149 West Lakeview Point , Calgary,
AB,

Phone: 403-585-5270
cawarawa@shaw.ca