

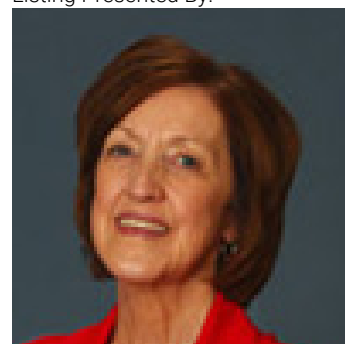


4715 88 Avenue Calgary Alberta

\$1,000

**** INDIVIDUAL OFFICES WITH WINDOW AVAILABLE**READY FOR IMMEDIATE POSSESSION!!FULLY FURNISHED WITH OFFICE DESK / CHAIR & WI FI** Located in the new Saddlepeace subdivision of northeast Calgary, right on Metis Trail and with direct access to 88 Avenue, in front of Savanna. This is an amazing location with the new Sikh temple and private school within walking distance to Guru Nanak Gate. - INDIVIDUAL OFFICE SPACES FOR RENT \$1,000 PER OFFICE WHICH INCLUDES DESK / CHAIR AND WI FI - COMMON RECEPTION AREA / COMMON KITCHEN SPACE (id:6769)

Listing Presented By:



Originally Listed by:
Real Broker

<http://jazz.livlovecalgary.com/>



CIR

REALTY

149 West Lakeview Point , Calgary,
AB,

Phone: 403-585-5270
cawarawa@shaw.ca