

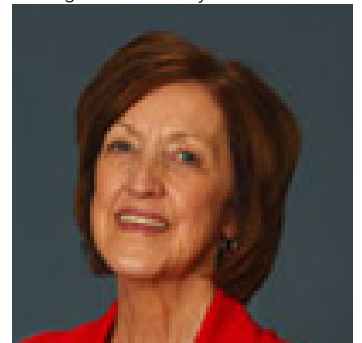


620 Marsh Road Calgary Alberta

\$35

Prime Leasing Opportunity on Edmonton Trail - Bridgeland Discover a premium commercial space now available for lease on bustling Edmonton Trail, nestled in the heart of Bridgeland -- one of Calgary's most vibrant inner-city communities. This location offers unmatched exposure with high pedestrian and vehicle traffic, making it ideal for businesses looking to thrive in a dynamic urban setting. Highlights: Prime Location: Situated within a dense multi-family residential area, surrounded by essential amenities including retail shops, medical services, and dining establishments. Exceptional Visibility: Benefit from consistent exposure to foot traffic and commuters along Edmonton Trail, a major thoroughfare. Thriving Community: Bridgeland is a hub of activity, offering a perfect blend of urban convenience and neighborhood charm. Versatile Use: Ideal for retail, professional services, or boutique businesses seeking a highly visible and accessible space. Don't miss this rare opportunity to position your business in a sought-after area with the infrastructure and vibrancy to support growth. (id:6769)

Listing Presented By:



Originally Listed by:
Century 21 Bamber Realty LTD.

<http://www.calgarycommercialrealty.com>



CIR

REALTY

149 West Lakeview Point , Calgary,
AB,

Phone: 403-585-5270
cawarawa@shaw.ca