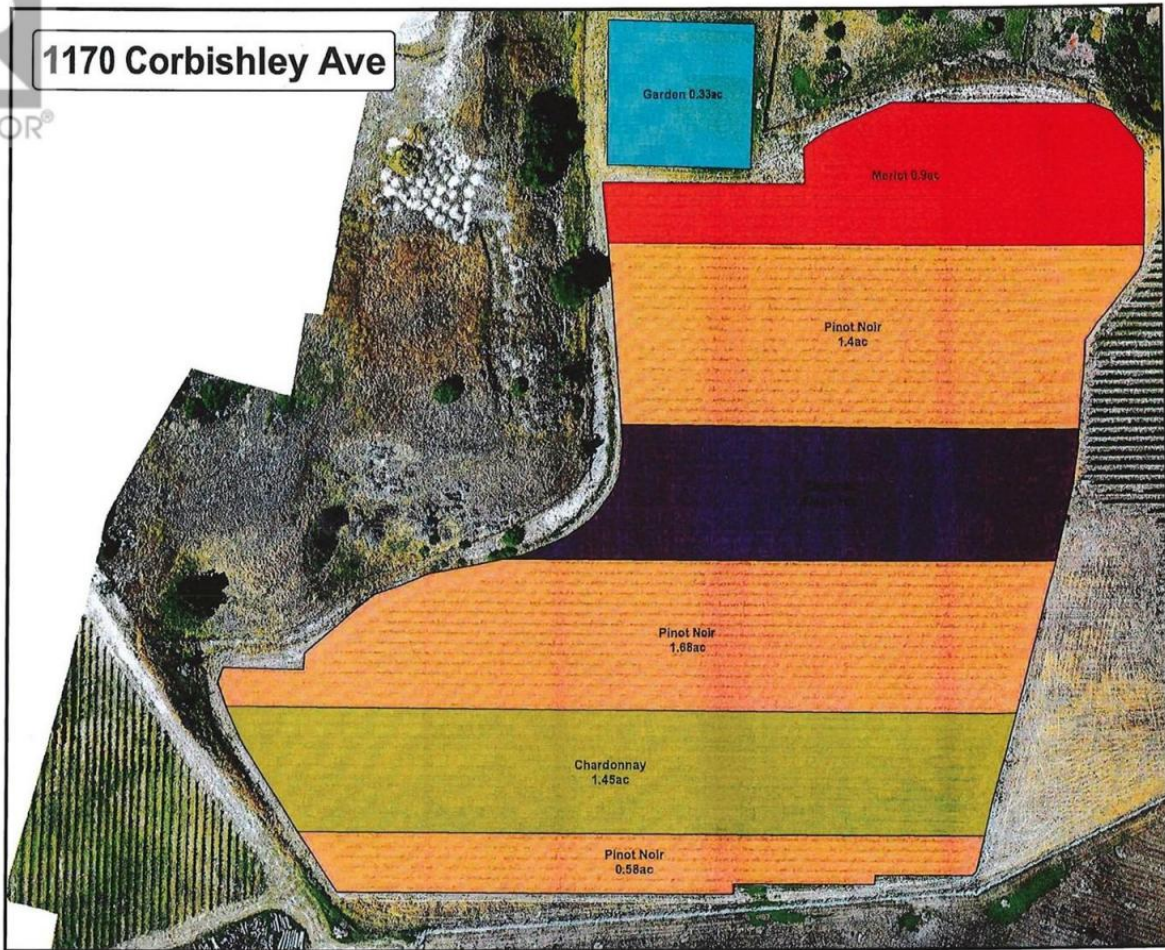




1170 Corbishley Ave



# 1170 Corbishley Avenue Penticton British Columbia

\$2,390,000

8.5 Acres of prime farmland located on the Naramata Bench. Currently 6 + acres planted and may popular varieties. This property is accessed through a panhandled driveway with services brought to the main area of the land. There are several locations to build you dream home and or hobby farm or estate winery with incredible valley and lake views. This is a rare opportunity to own some prime Okanagan Valley property. Call the Listing representative today for a complete package. (id:6769)

Listing Presented By:



Originally Listed by:

Royal LePage Locations West



Royal

LePage

#4002 - 2271 Harvey Ave ,  
Kelowna, BC,

Phone: (250) 860-1100  
lorneayers@royallepage.ca

The property information on this website is derived from the Canadian Real Estate Association's Data Distribution Facility (DDF®). DDF® references real estate listings held by various brokerage firms and franchisees. The accuracy of information is not guaranteed and should be independently verified. The trademarks REALTOR®, REALTORS® and the REALTOR® logo are controlled by The Canadian Real Estate Association (CREA) and identify real estate professionals who are members of CREA. The trademarks MLS®, Multiple Listing Service® and the associated logos are owned by CREA and identify the quality of services provided by real estate professionals who are members of CREA.