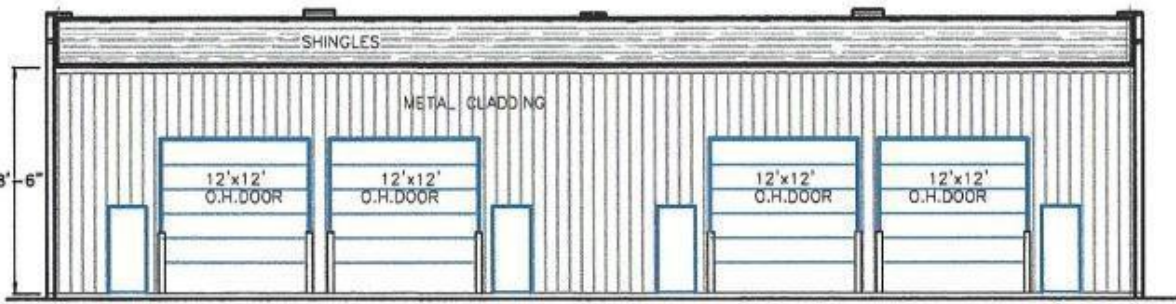




1  
A-3  
FRONT ELEVATION



2  
A-3  
REAR ELEVATION

# Regina Saskatchewan

\$14

New warehouse development planned for 1560 Winnipeg St. Great central location, close to downtown with easy access to all areas of the city. The warehouse bays that are available to rent will be either 4050 +/- or 8100 SF +/- depending on Tenant's requirements. This property has excellent exposure on Winnipeg St. with a traffic count of 26,000 vehicles +/- . This 29,227 SF parcel is fully fenced and secure. Landlord is also willing to enter into a land lease for the site or will build to suit. Please call agent for more details. (id:6769)

Listing Presented By:



Originally Listed by:  
RE/MAX Saskatoon



Royal

LePage

#4002 - 2271 Harvey Ave ,  
Kelowna, BC,

Phone: (250) 860-1100  
lorneayers@royallepage.ca

The property information on this website is derived from the Canadian Real Estate Association's Data Distribution Facility (DDF®). DDF® references real estate listings held by various brokerage firms and franchisees. The accuracy of information is not guaranteed and should be independently verified. The trademarks REALTOR®, REALTORS® and the REALTOR® logo are controlled by The Canadian Real Estate Association (CREA) and identify real estate professionals who are members of CREA. The trademarks MLS®, Multiple Listing Service® and the associated logos are owned by CREA and identify the quality of services provided by real estate professionals who are members of CREA.