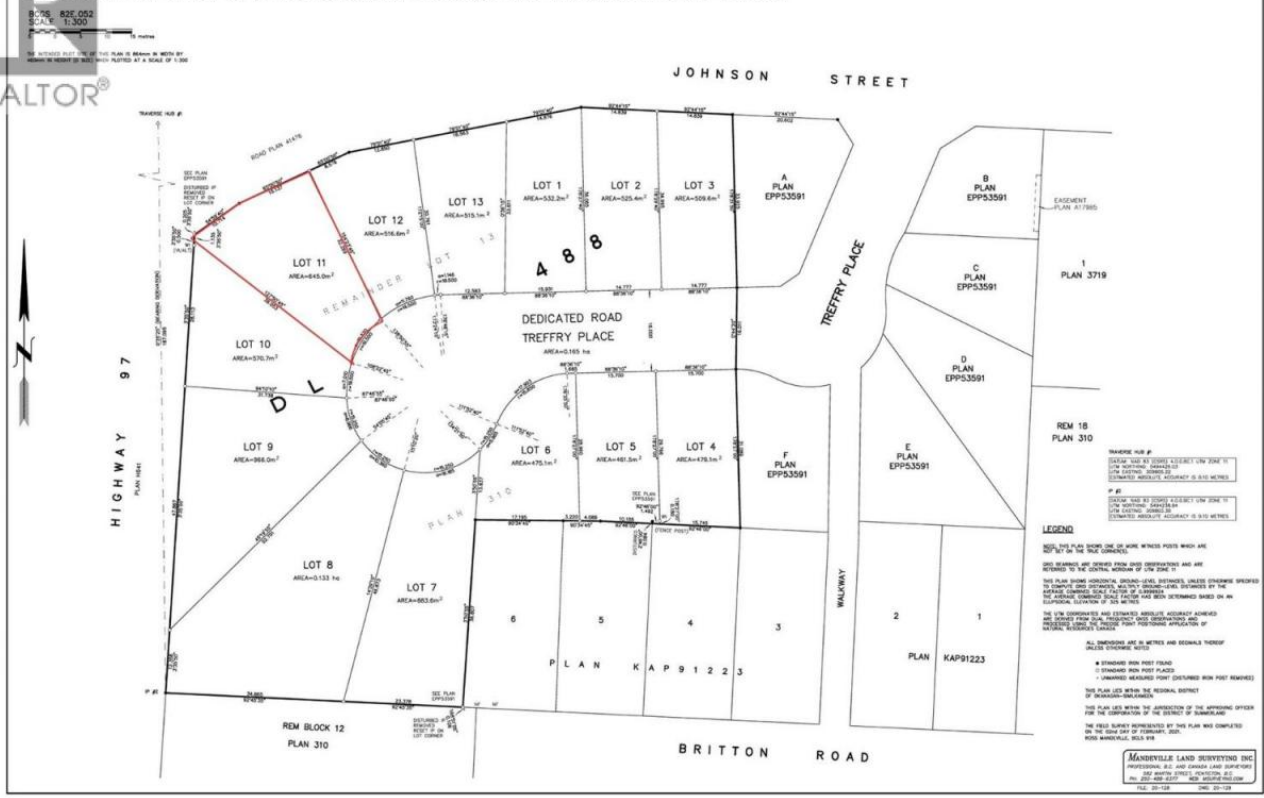


SUBDIVISION PLAN OF LOT 13, DL 488, ODYD, PLAN 310 except PLANS 41476, KAP91223 AND EPP53591

PLAN EPP104282



1732 TREFFRY Place Summerland British Columbia

\$279,000

Build your dream home in one of Trout Creek's most desirable new development areas. This prime lot offers the perfect blend of peaceful community living and everyday convenience. Just a short walk or bike ride brings you to the beach, where you can enjoy sunny Okanagan days by the water, while nearby schools make this an ideal location for families. Situated only minutes from Penticton, you'll have quick access to shopping, dining, wineries, and all the amenities the South Okanagan has to offer--while still enjoying the quieter pace and charm of Trout Creek. This property is a fantastic opportunity to invest in a thriving area and create a space tailored entirely to your vision. Whether you're looking to build now or hold for the future, this lot delivers location, lifestyle, and potential. (id:6769)

Listing Presented By:

Originally Listed by:
 RE/MAX Penticton Realty



LePage
 #4002 - 2271 Harvey Ave,
 Kelowna, BC,
 Phone: (250) 860-1100
 lorneayers@royallepage.ca

The property information on this website is derived from the Canadian Real Estate Association's Data Distribution Facility (DDF®). DDF® references real estate listings held by various brokerage firms and franchisees. The accuracy of information is not guaranteed and should be independently verified. The trademarks REALTOR®, REALTORS® and the REALTOR® logo are controlled by The Canadian Real Estate Association (CREA) and identify real estate professionals who are members of CREA. The trademarks MLS®, Multiple Listing Service® and the associated logos are owned by CREA and identify the quality of services provided by real estate professionals who are members of CREA.