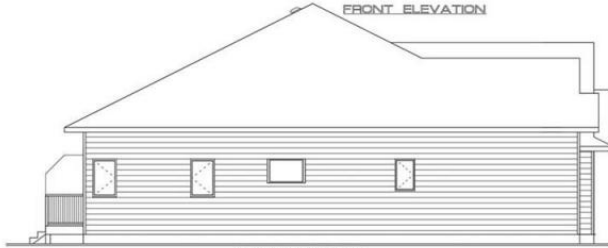
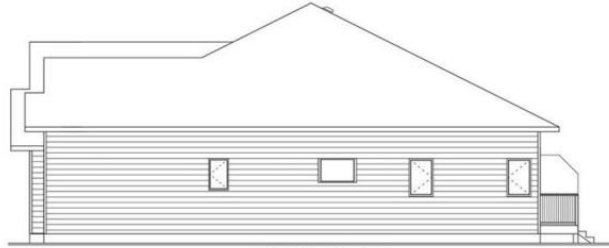




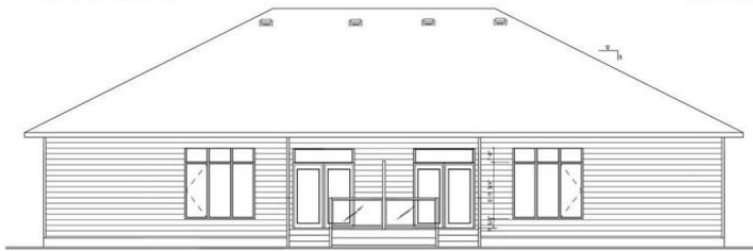
FRONT ELEVATION



LEFT ELEVATION



RIGHT ELEVATION



REAR ELEVATION

EXTERIOR FINISH AS PER SPEC.  
 SHALL BE BY BARBERS AND MUST BE  
 ADJUSTED TO NOT EXCEED 1/2" DRAINAGE  
 ASSET OWNER'S STONE TO BUT BRICK.

PERSONALIZED HOME DESIGNS  
 1000 WILSON CREEK  
 SALMON ARM, B.C.  
 V1K 2M6

TYPE	NO.	NO.
STAND ALONE	1	1
DUPLX	8	16
TOTAL	9	17

# 231 20 Street 5 Salmon Arm British Columbia

\$649,000

If you have been looking for that upscale development, look no further! This 1400 sqft rancher with large double car garage will not disappoint! The development, Creekside Estates, will consist of 19 homes, 8 duplex style and 3 stand alone homes. This home sits at the bottom of the development in a quiet corner at the bottom beside green space and a natural creek. If your looking for privacy, it's a 10 out of 10! The complex is built in a beautiful quiet setting surrounded by loads of green space, a natural creek and pond. This home will have 2 bedrooms and 2 bathrooms. Large open concept living, huge gourmet kitchens with massive island with quartz counters, 9 ft. ceilings, extra large windows, large master bedrooms with 5 piece master bathrooms and walk-in closet. The price includes, fully finished home, fully landscaped, A/C, gas fireplace, quartz counters in the kitchen, and a \$5000 appliance package or credit. Homes take 5-6 months for completion and 10% deposit required. Similar homes are built and ready for viewing or purchase. The developer, Uptown Ventures is well known in Salmon Arm for high standards and quality of work! Don't miss out, call today for all the information. (id:6769)

Living room 13'8" x 15'8"

Kitchen 19'3" x 9'2"

5pc Ensuite bath 9'3" x 8'7"

Bedroom 9'6" x 11'0"

Full bathroom 7'7" x 9'6"

Dining room 9'1" x 11'3"

Primary Bedroom 11' x 13'10"

Listing Presented By:



Originally Listed by:

Homelife Salmon Arm Realty.Com



Royal

LePage

#4002 - 2271 Harvey Ave ,  
Kelowna, BC,

Phone: (250) 860-1100  
lorneayers@royallepage.ca