

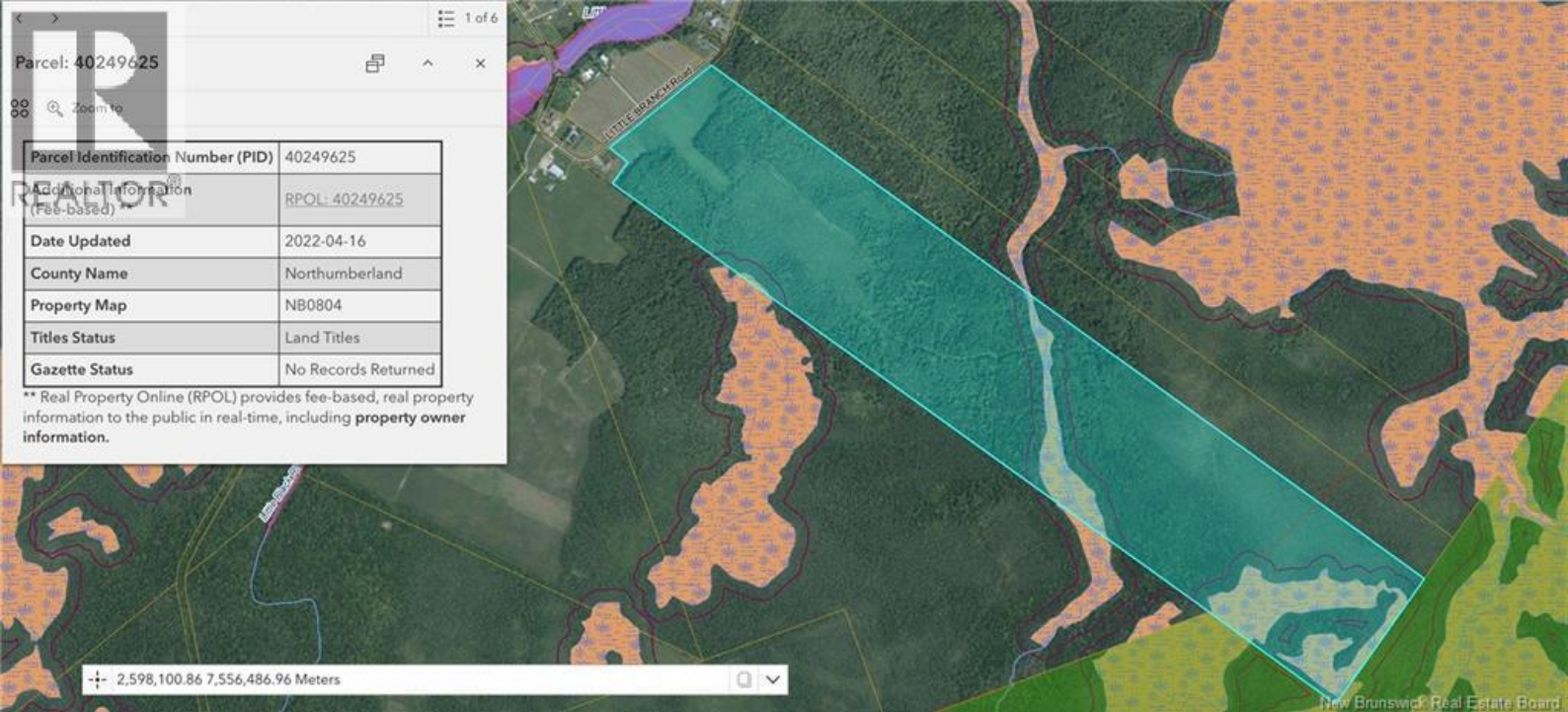
Parcel: 40249625

Zoom to

1 of 6

Parcel Identification Number (PID)	40249625
Additional Information (Fee-based)	RPOL: 40249625
Date Updated	2022-04-16
County Name	Northumberland
Property Map	NB0804
Titles Status	Land Titles
Gazette Status	No Records Returned

\*\* Real Property Online (RPOL) provides fee-based, real property information to the public in real-time, including **property owner** information.



# Black River Bridge New Brunswick

\$268,250

Looking for a place to build your dream home? A perfect place for a camp? Do you enjoy outdoor activities?  
This parcel of land located in Little Branch, NB offers all that and more! (id:6769)

Listing Presented By:

Originally Listed by:  
RE/MAX Quality Real Estate Inc.

Royal

LePage

#4002 - 2271 Harvey Ave ,  
Kelowna, BC,  
  
Phone: (250) 860-1100  
lorneayers@royallepage.ca

The property information on this website is derived from the Canadian Real Estate Association's Data Distribution Facility (DDF®). DDF® references real estate listings held by various brokerage firms and franchisees. The accuracy of information is not guaranteed and should be independently verified. The trademarks REALTOR®, REALTORS® and the REALTOR® logo are controlled by The Canadian Real Estate Association (CREA) and identify real estate professionals who are members of CREA. The trademarks MLS®, Multiple Listing Service® and the associated logos are owned by CREA and identify the quality of services provided by real estate professionals who are members of CREA.