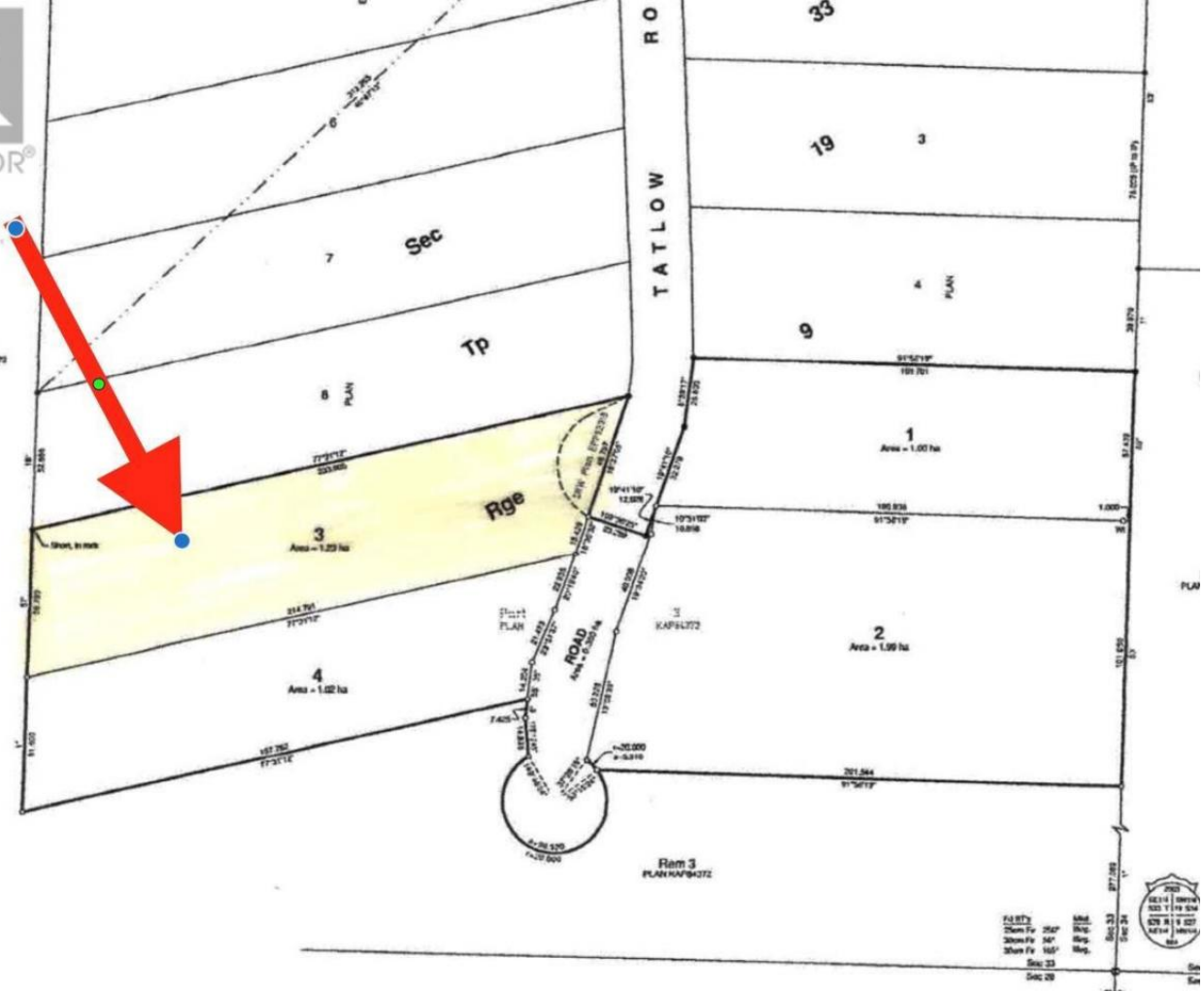




Ram 3  
PLAN KAP64272



# Lot 3 Tatlow Road PH4 Salmon Arm British Columbia

\$350,000

NEW PHASE of Ranchero Heights PH4 - Lot 3 Tatlow Road, Salmon Arm features 3.01 acres with great valley & mountain views on a mainly treed lot. Lot assessed and approved for septic system. Well is drilled at 700' ft. deep with 4 US gpm+. Lot located just outside of Salmon Arm city limits, near 2 golf courses and the Larch Hills Recreation area. As well the LOT is in area D of the CSRD and does not require building permits just build to BC Code Standards. GST applicable on sale. Come build your dream home or buy an investment! (id:6769)

Listing Presented By:

Originally Listed by:  
Royal LePage Kelowna

<http://www.erinleek.com/>



Royal

**LePage**  
#4002 - 2271 Harvey Ave ,  
Kelowna, BC,  
Phone: (250) 860-1100  
lorneayers@royallepage.ca

The property information on this website is derived from the Canadian Real Estate Association's Data Distribution Facility (DDF®). DDF® references real estate listings held by various brokerage firms and franchisees. The accuracy of information is not guaranteed and should be independently verified. The trademarks REALTOR®, REALTORS® and the REALTOR® logo are controlled by The Canadian Real Estate Association (CREA) and identify real estate professionals who are members of CREA. The trademarks MLS®, Multiple Listing Service® and the associated logos are owned by CREA and identify the quality of services provided by real estate professionals who are members of CREA.