



# 1128 Sunset Drive 1402 Kelowna British Columbia

\$765,000

Live the Resort Lifestyle all day every day. Breathtaking city and lakeviews in this bright and spacious south facing 2 Bed Waterfront Condo. Modern interiors with hand scraped hickory hardwood floors, hardwood cabinets with stainless steel appliances. Large primary bedroom with ample room for home office, sitting area. Private guest room with large windows, freshly painted and new flooring in bedrooms and bathrooms. Strata fee includes so many amenities. Geothermal Heating/Cooling, domestic water, indoor/outdoor pool, hotter, steam room, tennis court, picnic areas, boardroom, rec room, fitness room and private storage lockers all included. Rentals allowed and 2 pets welcomed. Boat Moorage is a possibility. Prime walking to downtown shops, restaurants, beaches & Parks. Verify Measurements if Important. Realtor has part ownership. (id:6769)

Other 11'0" x 8'0"

Storage 8'0" x 5'0"

Laundry room 8'0" x 5'0"

Full bathroom 8'0" x 5'0"

4pc Ensuite bath 8'0" x 5'0"

Bedroom 11'0" x 9'6"

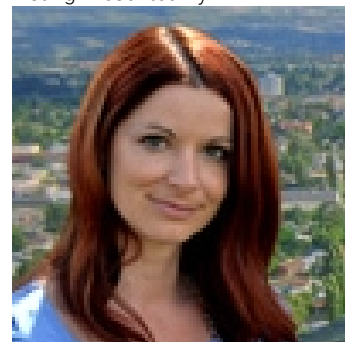
Primary Bedroom 15'0" x 11'6"

Kitchen 11'6" x 10'0"

Dining room 11'0" x 10'0"

Living room 14'0" x 13'0"

Listing Presented By:



Originally Listed by:  
Macdonald Realty Interior



**MacDonald Realty Kelowna**

2700 Richter Street , Kelowna, BC,

Phone: 250-878-4432  
nicoledumontier@shaw.ca

The property information on this website is derived from the Canadian Real Estate Association's Data Distribution Facility (DDF®). DDF® references real estate listings held by various brokerage firms and franchisees. The accuracy of information is not guaranteed and should be independently verified. The trademarks REALTOR®, REALTORS® and the REALTOR® logo are controlled by The Canadian Real Estate Association (CREA) and identify real estate professionals who are members of CREA. The trademarks MLS®, Multiple Listing Service® and the associated logos are owned by CREA and identify the quality of services provided by real estate professionals who are members of CREA.