



## 300 STRAYHORSE ROAD 210-202 Penticton BC

\$145,000

Step into paradise in best location at the base of Apex mountain! This fantastic design (lock-out) allows your family to stay on one side or use both sides. It is ideal for the times that you cannot make it up to your new family getaway. Simply put your unit in the Hotel's well run rental pool and watch the revenues stream in. It just makes sense! True ski in - ski out, new games room, fire pits for hot dogs and smores, and 2 hot tubs to soak in after a great day on the slopes with the kids. An amazing outdoor hockey rink, skating adventure trail and tubing just steps away from your front door. What are you waiting for? Call to arrange your private tour today! \*All measurements approx.

Living Room 13\6x12

Dining Room 7\6x6

Kitchen 7\8x6

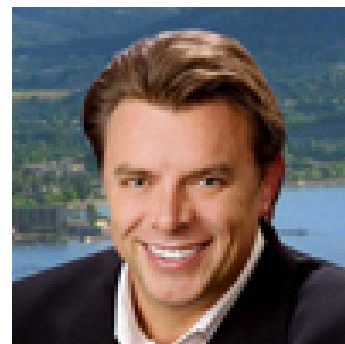
Bedroom 10x10

Bedroom 10x10

Foyer 7x3\8

4pc Bathroom

4pc Bathroom



**NICHOLAS T. PARKER, PREC\***  
ROYAL LEPAGE LOCATIONS WEST

Phone: 250 462 5464  
nicholasparker@royallepag  
Null



**Royal  
LePage Locations West Realty**

484 Main Street , Penticton, BC,

Phone: (250) 462-5464  
nicholasparker@royallepage.ca