

**3589 SKAHA LAKE ROAD
306 Penticton BC**

\$419,000

Living Room 11x9

Dining Room 10x8

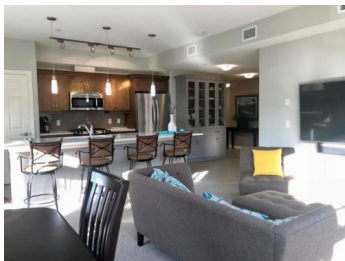
Kitchen 13x11

Master Bedroom 11x10

Bedroom 11x10

4pc Ensuite

4pc Bathroom



Enjoy carefree living near Skaha Beach & Park in this well appointed 2 bed, 2 bath condo with upgraded appliances and custom cabinetry by Ellis Creek Kitchens. Quality construction and tasteful finishing are obvious upon entry and the pride in ownership shows. Massive windows make this a daylight lover's dream with a comfortable west facing deck for enjoying the outdoors. Secure parking with a custom built private storage locker round out a perfect home for downsizing. Call for a private tour today for this sought after location. All measurements approximate.

NORM DAVIES, PREC*

ROYAL LEPAGE LOCATIONS WEST



Phone: 250-809-1875
normdavies@royallepage.ca
<http://www.southokanaganrealty.com>