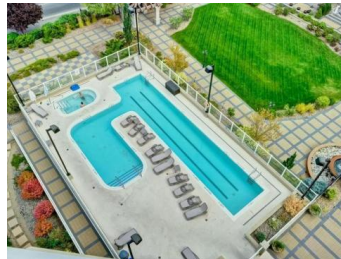


160 LAKESHORE DRIVE W  
902 Penticton BC

\$875,000

Living Room 18'9x15'5  
Dining Room 18'10x11'5  
Kitchen 11'5x10'5  
Master Bedroom 15'2x11  
Walk-in Closet 7'5x6'10  
Bedroom 12'5x11'5  
Utility Rm 7'1x5'5  
Porch 10x6  
5pc Ensuite  
4pc Bathroom



If spectacular views, bright open spaces and the ideal location for downtown living is what you are looking for, this is it. Located at the shores of Okanagan Lake with fantastic restaurants, shopping and beaches all within a few minutes walk. This expansive condo provides the sophistication you seek with granite counters, jetted tub within a spa-like ensuite, custom designed built ins for the large walk in closet and 2 coveted parking stalls. Enjoy all the benefits of a vacation lifestyle from the comforts of your own home. Call today for a private tour or full listing package. All measurements approx.

LYNDI CRUICKSHANK, PREC\*  
ROYAL LEPAGE LOCATIONS WEST



Phone: 250-809-1260  
lyndi@royallepage.ca  
<http://www.southokanaganrealty.ca>