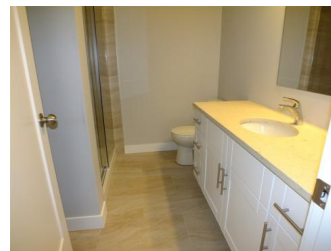
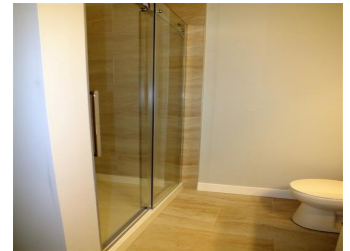


3910 CORY DRIVE Terrace BC

\$389,900

**RE/MAX**<sup>®</sup>  
**COAST MOUNTAINS**  
**(TERRACE)**



Beautiful, new and well located. this home is well located on Terrace's newest subdivision. Close to schools, NWCC and transportation, this no through road is ideal for a young family or retiring couple. Offering a spacious floor plan, open living and 4 bedrooms two baths, the layout is perfect for guests and family. The master suite features a spacious walk-in closet and ensuite. The kitchen is beautiful and open, boasting island, solid wood cupboards, quartz countertops, Samsung appliances and is open to the living dining space. This home is ready for you to move in and enjoy.

#### Main Floor

Dining Room 12'3 x 8'3

Kitchen 12'3 x 9'2

Master Bedroom 13'2 x 12'10

Walk-In Closet 7'10 x 5'

Bedroom 12' x 10'7

Bedroom 11'10 x 9'7

Bedroom 11'3 x 9'7

Laundry 6'9 x 5'

Foyer 13'6 x 6'

#### Rick McDaniel - PREC

RE/MAX Coast Mountains-Terrace

Phone: 250-615-1558

[www.rickmcdaniel.ca](http://www.rickmcdaniel.ca)



*NOTE: this representation is based in whole or in part on data generated by the British Columbia Northern Real Estate Board, Chilliwack & Real Estate Board or Real Estate Board of Greater Vancouver which assume no responsibility for its accuracy.*

39