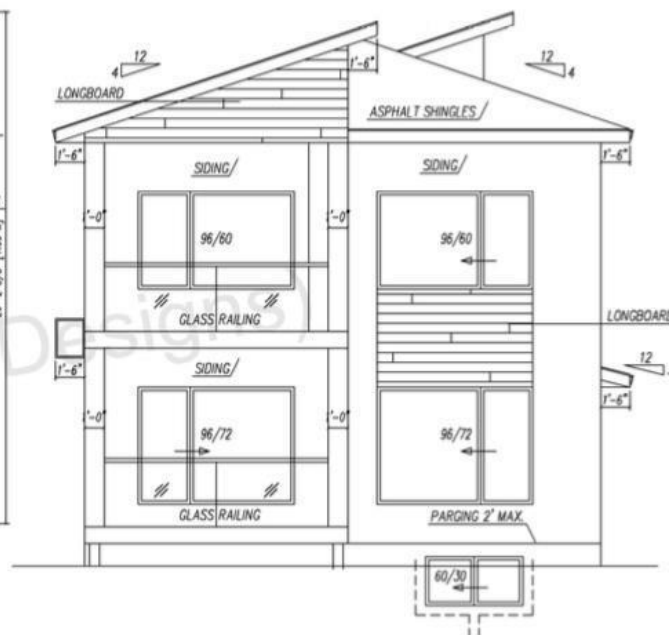


FRONT ELEVATION



REAR ELEVATION

8377 Mayday link Edmonton AB

\$739,900

Welcome to "The Concorde in the Orchards" situated in the vibrant Orchards subdivision. On the main level, there's a bedroom and a full bathroom, offering convenience and adaptability for residents and guests. The living area is generously spacious, featuring open-to-below space that create a warm and open atmosphere. The kitchen is adorned with two-tone cabinets and elegant quartz countertops, and it includes a dedicated spice kitchen for added functionality. Backyard has covered deck. Moving to the second floor, the layout is meticulously designed for both comfort and luxury. The master bedroom comes with a private 5 PC ensuite & covered balcony ensuring a luxurious experience. Bedroom 2 & 3 conveniently accesses a shared 3 PC bathroom with the loft, ensuring convenience for all occupants. This house displays modern finishes, including engineered hardwood and tiles on main floor while bathroom features Italian style tiles.

Listing Presented By:



Originally Listed by:
RE/MAX Excellence

soldbyjappyjuneja@gmail.com



RE/MAX Real Estate

129 Mountain Ash Drive,
Wetaskiwin, AB,

Phone: 780-361-9215
rsplant@telus.net