

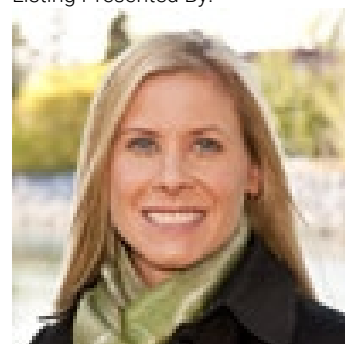


## 212 PAINT HORSE Drive Cochrane AB

\$489,900

The Ainsworth located across from the park! Not only does this home have one of the most coveted layouts of Excel homes built in Heartland but it is also in one of the most Prime Locations! The vaulted ceiling bonus room above the garage Offers beautiful south facing views through the 5 windows. And each window is custom fit with blackout blinds for evening movie enjoyment. The 3 large bedrooms are located on the upper level including the laundry room. The Master bedroom boasts a luxurious ensuite with his/her vanities, soaker tub, freestanding shower & water closet. The main level has the gourmet kitchen with large granite island and walkin butlers pantry. The living room and entry den/flex room have been carpeted with highend carpet that is guaranteed to not stain or show wear. The unfinished basement has a great layout to nicely finish and has roughed in plumbing. The garage is fully finished and the fenced backyard is nicely landscaped with deck and patio area. This home is in impeccable condition!

Listing Presented By:



Originally Listed by:  
CENTURY 21 BAMBER REALTY  
LTD.

[miranda@calgaryrealestatepro.pro](mailto:miranda@calgaryrealestatepro.pro)

**Century 21 Bamber Realty Ltd.**

1612 17th Ave SW , Calgary, AB,  
T2T 0E3

Phone: 403-470-0021  
[miranda.moser@century21.ca](mailto:miranda.moser@century21.ca)