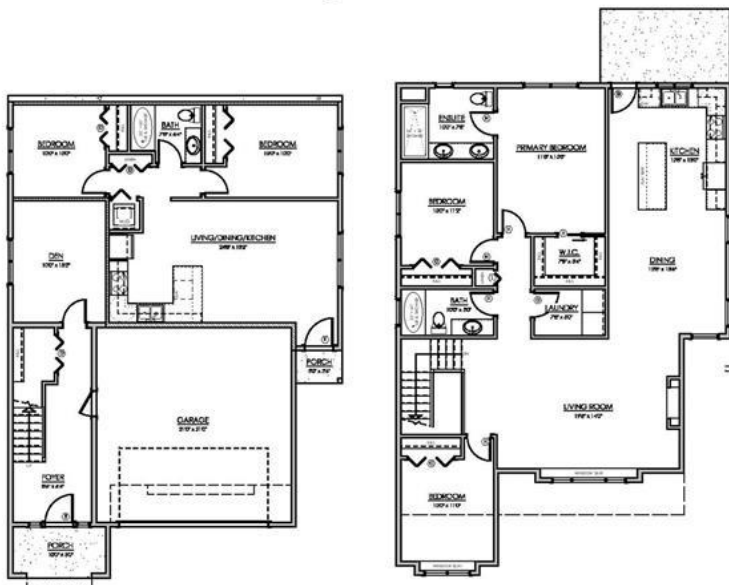


Totangi Properties

Typical Incline Lots 3-12
Cedarbrook Way
Langford, B.C.



Lower Floor

Primary: 344 sq.ft.
Suite: 751 sq.ft.
Garage: 484 sq.ft.

Main Floor

Primary: 1482 sq.ft.

LIVING AREA
Primary: 1826 sq.ft.
Suite: 751 sq.ft.
Total: 2577 sq.ft.

OTHER
Garage: 484 sq.ft.
MLSP090714

1243 Cedarbrook Way Langford BC

\$579,900

Cedarbrook - Lot 6 - Custom building lots allowing for detached homes with legal suites in the South Bear Mountain area at Cedarbrook! This exciting new neighborhood is located on Langford's Skirt Mountain, one of the fastest growing communities in Greater Victoria. Cedarbrook offers 27 fully serviced building lots, with options for 2 and 3 level homes on flat, incline, or walk out basement style lots. Lot 6, is a step-up or incline style lot, allowing for convenient hosting with the second level yard, as well as a 3 level design opportunity to create a great space and pick up some of the incredible views. Situated on Langford's Skirt Mountain with easy access to incredible local trails, lakes and outdoor adventure, close to area schools, Royal Roads University, and is just down the road from a new childcare centre. Premier recreation and entertainment venues like neighbouring Bear Mountain Resort, City Centre Park and the YMCA-YWCA Aquatic Centre are also close by!

Listing Presented By:



Originally Listed by:
Royal LePage Coast Capital -
Westshore

mike.hartshorne@gmail.com

RE/MAX SCOTT FRASER
Ocean Pacific Realty EACH OFFICE OWNED INDEPENDENTLY

RE/MAX Ocean Pacific Realty

2230A Cliffe Ave., Courtenay, BC,
V9N 2L4

Phone: 250-702-5950

Fax:

corony@shaw.ca