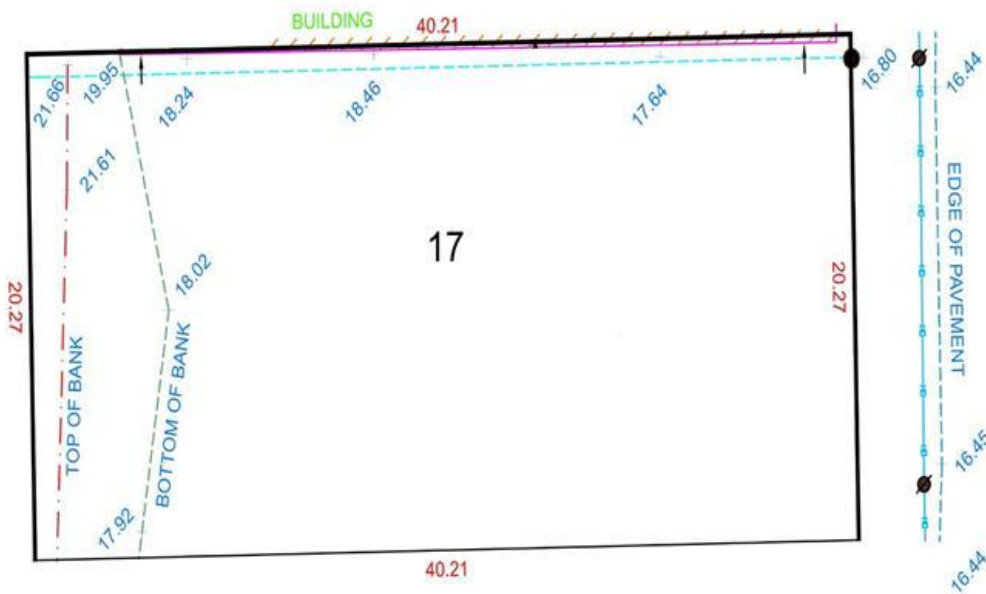
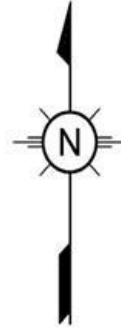


SITE PLAN OF:
 LOTS 16 BLOCK 3, SECTION 1, NANAIMO DISTRICT, PLAN 584.

LEGEND

- STANDARD IRON POST FOUND
- ⦿ UTILITY POLE
- - - TOP OF BANK
- - - BOTTOM OF BANK
- STRUCTURE
- FENCE
- OVERHEAD WIRE



MLS#979527

212&218 Fry St Nanaimo BC

\$998,000

Unleash the Potential! Welcome to 212 and 218 Fry Street, extraordinary properties offering a rare investment opportunity! Whether you're looking to buy one or buy both, these gems are a must-see. Maybe you're an investor eyeing a singular purchase or a visionary looking to acquire both properties, this is a chance you won't want to miss. These properties boast the highly coveted COR3 zoning. This rare zoning opens the door to a myriad of possibilities, catering to the diverse needs of the surrounding community. The permitted uses are literally from A-Z, offering an unparalleled flexibility that's hard to find. Imagine the potential: a bustling hotel, apartment buildings or condos, a storage facility, or launch a convenient laundromat. For those with a community-focused vision, a neighborhood pub or a recreation facility could become the new local hotspot. Call me today!! All measurements are approximate

Listing Presented By:



Originally Listed by:
 RE/MAX of Nanaimo

kelly@thevipropertygirl.com



RE/MAX Ocean Pacific Realty

2230A Cliffe Ave., Courtenay, BC,
 V9N 2L4

Phone: 250-702-5950
 Fax:
 corony@shaw.ca