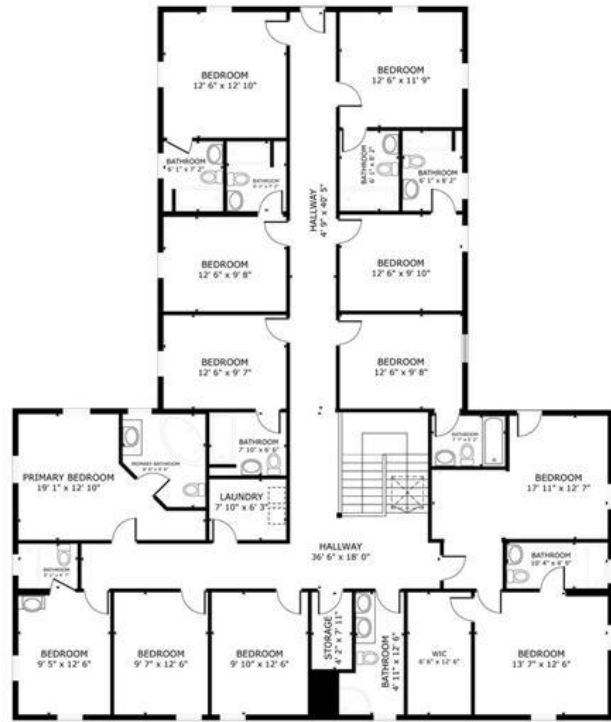


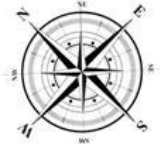
FLOOR 1



FLOOR 2

FLOOR 1 AREA: 3300 sq.ft
 FLOOR 2 AREA: 3300 sq.ft
 2950 DRAGONS LANE GABRIOLA
 LAND SIZE: 5 acre
 TOTAL: 6600 sq. ft

TOTAL SQUARE FOOTAGE MEASUREMENTS TAKEN FROM BC ASSESSMENT. BUYER SHOULD VERIFY IF IMPORTANT.
 FLOOR PLANS ARE MADE USING MATTERPORT. BUYER SHOULD VERIFY IF IMPORTANT.



Matterport
MLS#6956272

2950 Dragon's Lane Gabriola Island BC

\$4,800,000

An incredible opportunity to own prime commercial real estate on Gabriola Island!!! To own an established rare commercial zoning waterfront resort on 5.18 acres located close to the ferry terminal on Gabriola Island!!! The stunning ocean view resort building has 11 bedrooms and 10 bathrooms. It features approximately 2600 ft of shoreline, private peninsula, a beautiful little bay and opens all year round. This business includes land, buildings, fixtures and equipment. This turnkey opportunity allows you to continue with business as usual, and gives you time to implement your own changes and creative ideas. Great investment!!!

Listing Presented By:



Originally Listed by:
 Regent Park (Supreme) Realty

JohnnyZhang918@gmail.com



Royal

LePage in the Comox Valley

121-750 Comox Road , Courtenay,
 BC, V9N3P6

Phone: 250-702-5950

Fax:

corony@shaw.ca