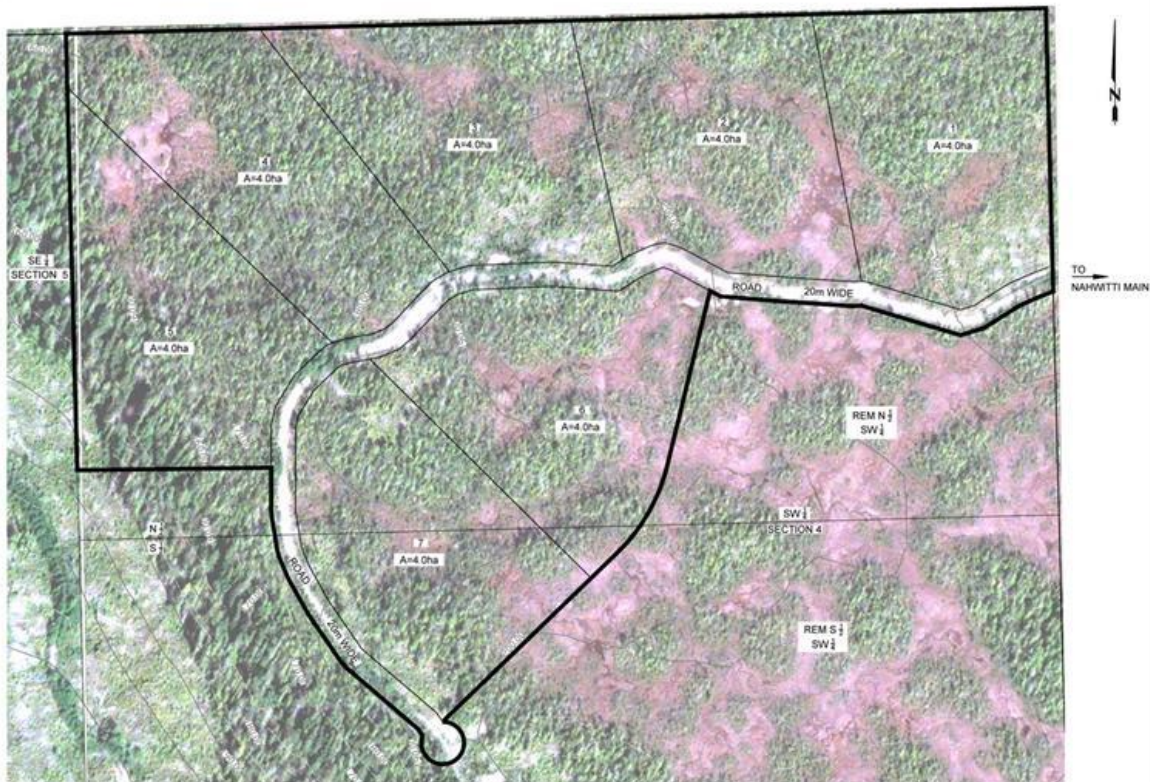


PROPOSED SUBDIVISION PLAN OF PART OF:
**THE SOUTH ½ AND THE NORTH ½ OF THE SW ¼ OF SECTION 4
 AND TOWNSHIP 34, RUPERT DISTRICT**

P.I.D.: 009-857-494, 000-171-395

ZONING: A-1

ACCESS BY FOREST SERVICE ROAD
 BC REGULATION 334/79 SECTION 15



May 14, 2025
J.E. ANDERSON & ASSOCIATES
 Surveyors - Engineers
 Victoria - Nanaimo - Parksville - Campbell River
 F-1250 CEDAR STREET, CAMPBELL RIVER, BC. V9W 2W5
 File: 120893_MT - CURRENT

MAJOR CONTOUR INTERVAL 10 m.
 MINOR CONTOUR INTERVAL 5 m.
 ELEVATIONS ARE IN METERS.
 CONTOURS DATA DERIVED FROM THIRD PARTY SOURCES

SCALE 1:3000 ALL DISTANCES ARE IN METERS AND DECIMALS THEREOF
 0 30 60 90 120 150 180 210 240 270 300
 THE INTENDED PLOT SIZE OF THIS PLAN IS 432 mm IN WIDTH BY 280 mm IN HEIGHT (B SIZE) WHEN PLOTTED AT A SCALE OF 1:3000.

ML56999829

6 Cape Sutil Holberg (Off) Hwy Port Hardy BC

\$1,750,000

Opportunity of the Century! Get in now on the North Island's newest subdivision - offering multiple 10 acre lots with the option to subdivide further and well suited for resort development. Soul mates with nature is the inspiration for the development. Depending on the lot and the home built, ocean views are possible, mountain views a potentiality and owning a forest sanctuary is a probability. The vision for this new community is outstanding. Are you aware of what Tofino or any other major community was originally? Be forward thinking like that when you view the information for these lots. Think big - dream big! If you are among visionary leaders who want to develop this area, own 10 acres for yourself, go together with 9 of your friends for an acre each or just want to invest for your future generations, call, come and check it out! The owner is open to vendor financing. He'll be onsite and willing to assist, guide or partner with construction, power, sewage and water. GST applicable

Listing Presented By:



Originally Listed by:
 Royal LePage Advance Realty (PH)

sandramasales69@gmail.com



RE/MAX Ocean Pacific Realty

2230A Cliffe Ave., Courtenay, BC,
 V9N 2L4

Phone: 250-702-5950
 Fax:
 corony@shaw.ca