

**PROPOSED DEVELOPMENT  
PLAN OF SECTION 16,  
METCHOSIN DISTRICT,  
EXCEPT PART IN PLAN VIP62759.**

Scale 1:5000 metric

**NOTE:**

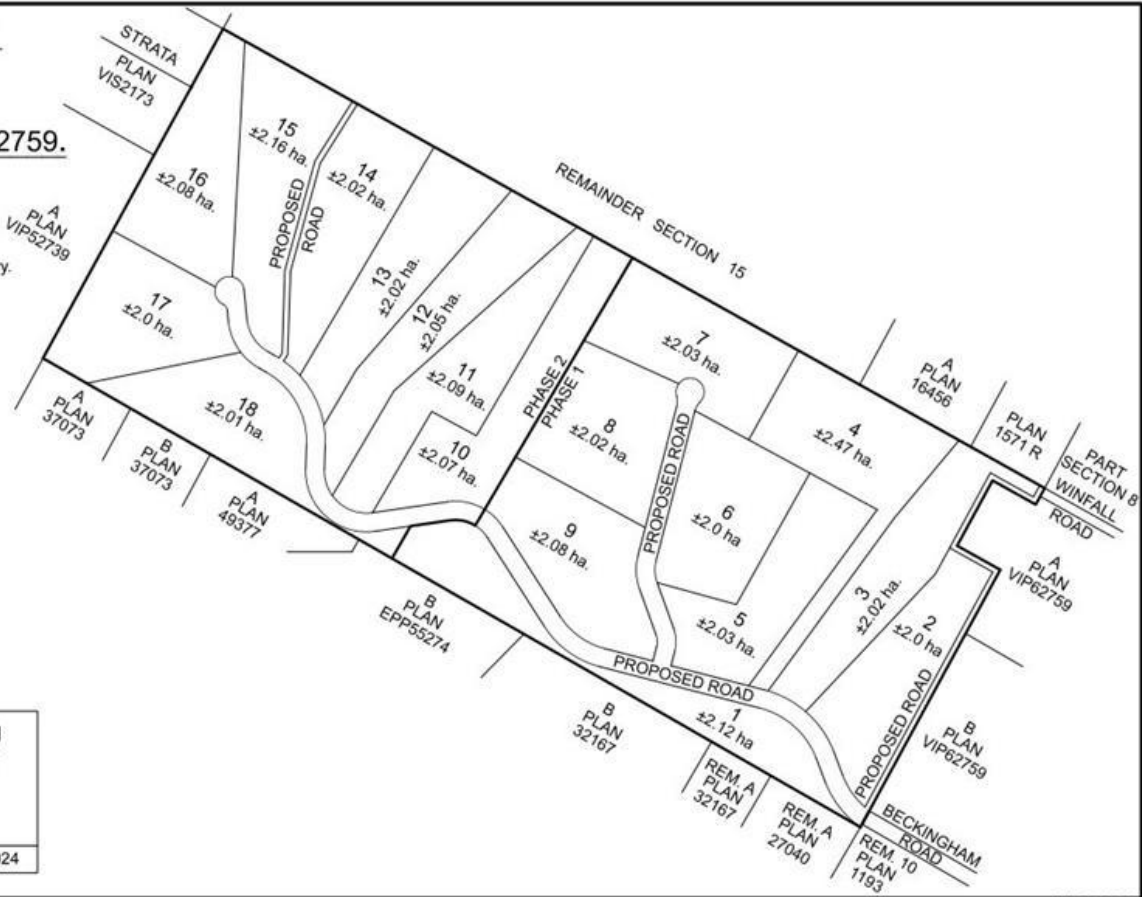
Proposed lot layout, yield and areas are subject to vary.  
Proposed Rights of Way, Easements, Covenants  
and charges are not known.



© 2024 Apex Land Surveying Ltd.

**Summit Land Surveying**  
Operated by Apex Land Surveying Ltd.  
#101-630 Goldstream Avenue  
Victoria B.C. V9B 2W8  
Telephone 250.391.6708  
www.summitsurveying.ca

File: W160-Lida-SD3-DS Date: February 21, 2024



## 4696 BECKINGHAM Rd LOT 1 Metchosin BC

\$749,000

Welcome to Beckingham Estates. A boutique subdivision of 18 Fee Simple (no strata), rural lots in the Heart of Metchosin BC. Master planned by award winning LIDA Developments, this brand new subdivision features quiet no through roads in a picturesque, natural setting. Minutes from Metchosin town centre, Royal Bay shopping, Pedder Bay Marina, Matheson Lake, beach parks, golf, schools and more. Direct access to the Galloping Goose Trail. Several lots to choose from. A truly unique and rare offering. Call now to book your private tour.

Listing Presented By:



Originally Listed by:  
Team 3000 Realty Ltd

matt@mattloken.com

**RE/MAX** SCOTT FRASER  
Ocean Pacific Realty EACH OFFICE OWNED INDEPENDENTLY

**RE/MAX Ocean Pacific Realty**

2230A Cliffe Ave., Courtenay, BC,  
V9N 2L4

Phone: 250-702-5950

Fax:

corony@shaw.ca