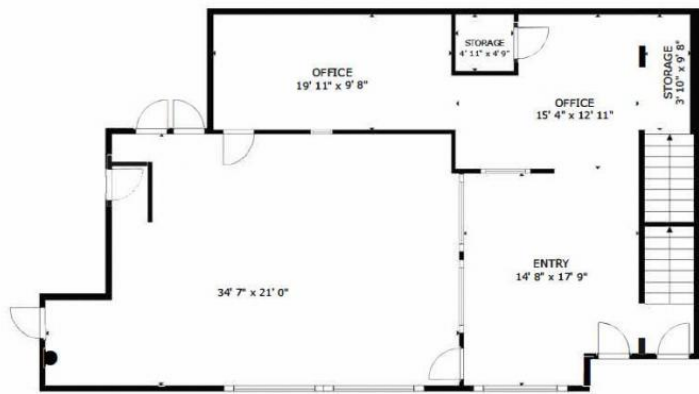
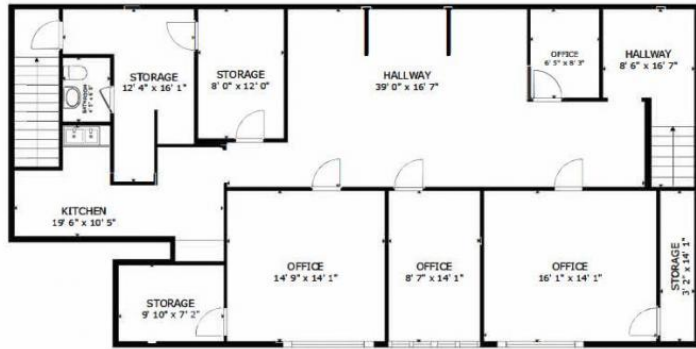


**BASEMENT**



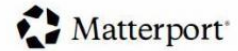
**SUITE #100 (MAIN FLOOR)**



**SUITE #200 (SECOND FLOOR)**



GROSS INTERNAL AREA  
 FLOOR 1 463 sq.ft. FLOOR 2 1,436 sq.ft. FLOOR 3 1,858 sq.ft.  
 TOTAL : 3,757 sq.ft.  
 SIZES AND DIMENSIONS ARE APPROXIMATE, ACTUAL MAY VARY.



# Edmonton Alberta

\$14

Outstanding corner exposure with more than 20,000 VPD in downtown Edmonton! Retail/office available over two floors, with direct entry available on all. Communal yard and large parking area available as well, perfect for daycare or similar uses. (id:6769)

Listing Presented By:



Originally Listed by:  
 Jaffer Realty Inc

<http://www.jafferinc.com/>



**RE/MAX River City**

13120 St Albert Trail NW,  
 Edmonton, AB, T5L4P6

Phone: 780-982-1119  
 ahmadsai@remax.net

The property information on this website is derived from the Canadian Real Estate Association's Data Distribution Facility (DDF®). DDF® references real estate listings held by various brokerage firms and franchisees. The accuracy of information is not guaranteed and should be independently verified. The trademarks REALTOR®, REALTORS® and the REALTOR® logo are controlled by The Canadian Real Estate Association (CREA) and identify real estate professionals who are members of CREA. The trademarks MLS®, Multiple Listing Service® and the associated logos are owned by CREA and identify the quality of services provided by real estate professionals who are members of CREA.