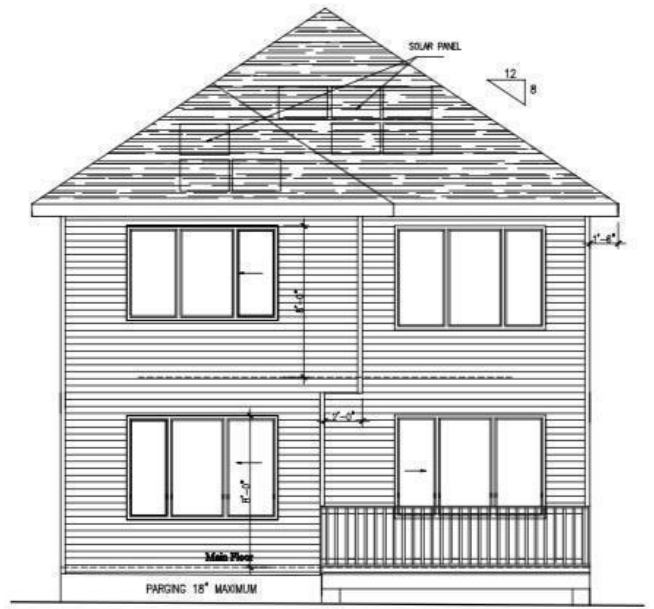


Front Elevation
SCALE 3/16"=1'-0"



Rear Elevation
SCALE 3/16"=1'-0"

Edmonton Alberta

\$649,900

Welcome to this stunning custom-built home in Goodridge Corners featuring a distinctive layout and double attached garage. Offering 3 bedrooms, 3 full bathrooms, a bonus room and a fully equipped spice kitchen, this home is designed for modern family living. The main floor boasts a functional mudroom, spacious kitchen with oversized spice kitchen, open-to-above living room filled with natural light, and a versatile bedroom/den with a full bathroom. Upstairs offers 3 generously sized bedrooms including the primary suite, 2 full bathrooms, bonus room and convenient laundry. Separate side entrance to the basement with 2 windows provides excellent potential for a future suite. Located close to schools, shopping and major amenities with quick access to Anthony Henday Drive, this home offers the perfect blend of comfort, style and convenience. Energy-modelled to achieve over 30% greater efficiency compared to standard reference construction, helping reduce annual energy consumption. A must see! (id:6769)

Living room Measurements not available

Dining room Measurements not available

Kitchen Measurements not available

Den Measurements not available

Primary Bedroom Measurements not available

Bedroom 2 Measurements not available

Bedroom 3 Measurements not available

Listing Presented By:



Originally Listed by:
MaxWell Devonshire Realty

<https://www.maxwellrealty.ca/agents/joseph-yisak/>



RE/MAX River City

13120 St Albert Trail NW,
Edmonton, AB, T5L4P6

Phone: 780-982-1119
ahmadsai@remax.net