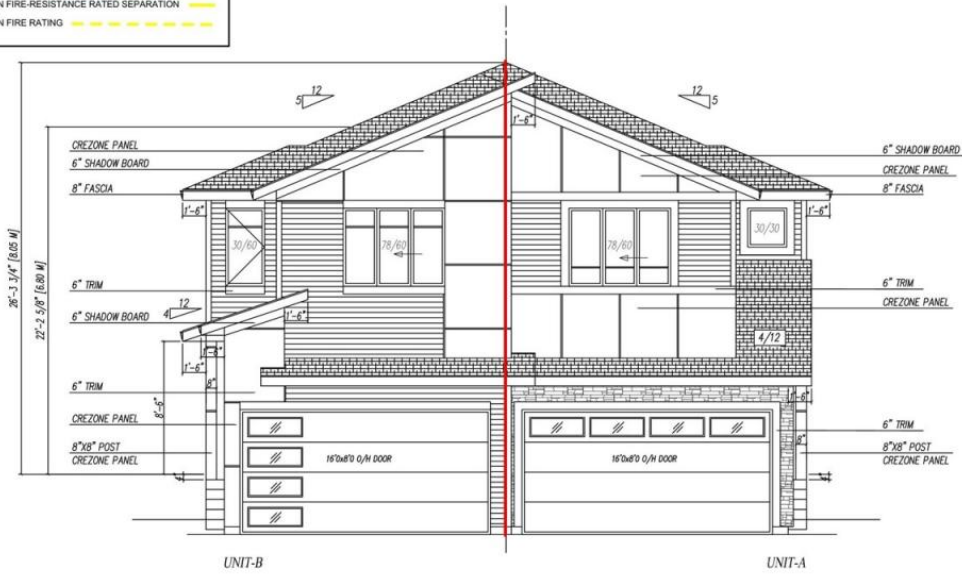




LEGEND	
1H FIRE-RESISTANCE RATED SEPARATION	
1H FIRE RATING	
45MIN FIRE-RESISTANCE RATED SEPARATION	
45MIN FIRE RATING	



FRONT ELEVATION

1 HR FIRE SEPARATION Between Units Continuous From Top Foundation To Underside Of Roof Sheathing
 Non-vented soffit to extend 4ft on both sides of party wall, and for at offset of party wall, and 1/2" exterior grade gypsum board or 1/2" Deniglass



Edmonton Alberta

\$549,000

Brand New two-story Duplex In Crawford Plain. This beautiful open-concept duplex boasts about 2400 sq. ft. of living space with a Kitchen, living room, dining room and a 2ps bathroom on the main level & 3 beds, two full baths and a loft upstairs. The master bedroom has a full bath with a tub and a spacious walk-in closet. The fully finished secondary suite basement has two beds, a kitchen, a living room & a full bath. Fabulous exterior with a modern finish, double attached garage and much more. Close to schools, shopping center & public transportation. (id:6769)

- Bedroom 4 Measurements not available
- Bedroom 5 Measurements not available
- Second Kitchen Measurements not available
- Living room Measurements not available
- Dining room Measurements not available

- Kitchen Measurements not available
- Primary Bedroom Measurements not available
- Bedroom 2 Measurements not available
- Bedroom 3 Measurements not available
- Bonus Room Measurements not available

Listing Presented by:



Originally Listed by:
MaxWell Polaris

<http://www.simranjhand.com/>



RE/MAX Elite

17-8103 127 Ave , Edmonton, AB,
T5C 1R9

Phone: 780-982-1119
ahmadsai@remax.net