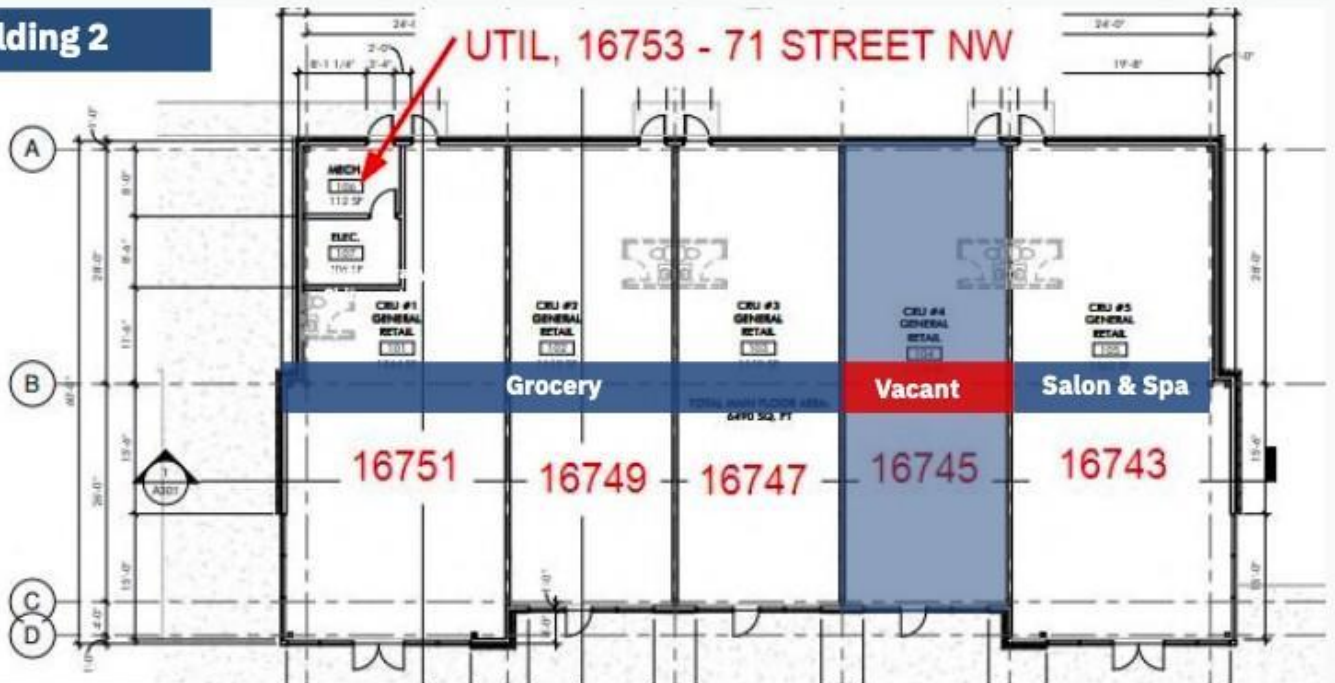


## Building 2



## Edmonton Alberta

\$39

Positioned in one of the city's most rapidly growing neighborhoods, Schonsee Landing offers a unique opportunity for forward-thinking businesses to establish themselves in a high-visibility, high-traffic location. Strategically located near major thoroughfares including 167 Avenue and 71 Street, this development ensures exceptional accessibility for both local residents and commuters. Schonsee Landing is designed to support a dynamic mix of commercial tenants, with ideal spaces for:

- Restaurants & Cafes
- Health & Wellness Services
- Boutique & Specialty Retail
- Professional Offices

Other Property Types: Office, Retail

Subject Space Width: 20' Ownership Interest: Private Seller Rights: No Appointment Name: Gurmeet Sandhu Appointment Phone: 780-991-6663 Lease Operating Costs Included: Management, Parking lot, Landscaping, Insurance, Property taxes Paragon Listing ID: E4455785 (id:6769)

Listing Presented By:



Originally Listed by:  
RE/MAX Real Estate

<https://gurmeetsandhu.ca/>



**RE/MAX River City**

13120 St Albert Trail NW,  
Edmonton, AB, T5L4P6

Phone: 780-982-1119  
ahmadsai@remax.net

The property information on this website is derived from the Canadian Real Estate Association's Data Distribution Facility (DDF®). DDF® references real estate listings held by various brokerage firms and franchisees. The accuracy of information is not guaranteed and should be independently verified. The trademarks REALTOR®, REALTORS® and the REALTOR® logo are controlled by The Canadian Real Estate Association (CREA) and identify real estate professionals who are members of CREA. The trademarks MLS®, Multiple Listing Service® and the associated logos are owned by CREA and identify the quality of services provided by real estate professionals who are members of CREA.