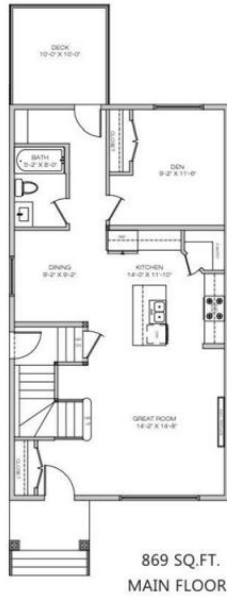




CANNES

1690sq.ft.
House Width - 22'



Floor plan, specifications & dimensions shown are approximate and subject to change without notice.

Spruce Grove Alberta

\$489,000

Your new address in Fenwyck surrounded by walkways and trails. This beautiful open concept home boasts a huge living space with a feature fireplace wall and an ample sized kitchen, a big island with a neatly tucked away dining area. A Den/Bedroom with a full bathroom and Laundry on the main floor. Upstairs consist of a bonus room, A primary bedroom with a good sized en-suite and a walk-in-closet. Two more good sized bedrooms with a full bathroom. The package gets completed and complimented by a 10'x10' deck and a double detached garage. A separate entrance to the basement is another extra feature. Still time to choose your finishings (id:6769)

Living room Measurements not available

Kitchen Measurements not available

Den Measurements not available

Breakfast Measurements not available

Primary Bedroom Measurements not available

Bedroom 2 Measurements not available

Bedroom 3 Measurements not available

Listing Presented By:



Originally Listed by:
MaxWell Polaris

<http://www.askjas.ca/>



RE/MAX River City

13120 St Albert Trail NW,
Edmonton, AB, T5L4P6

Phone: 780-982-1119
ahmadsai@remax.net