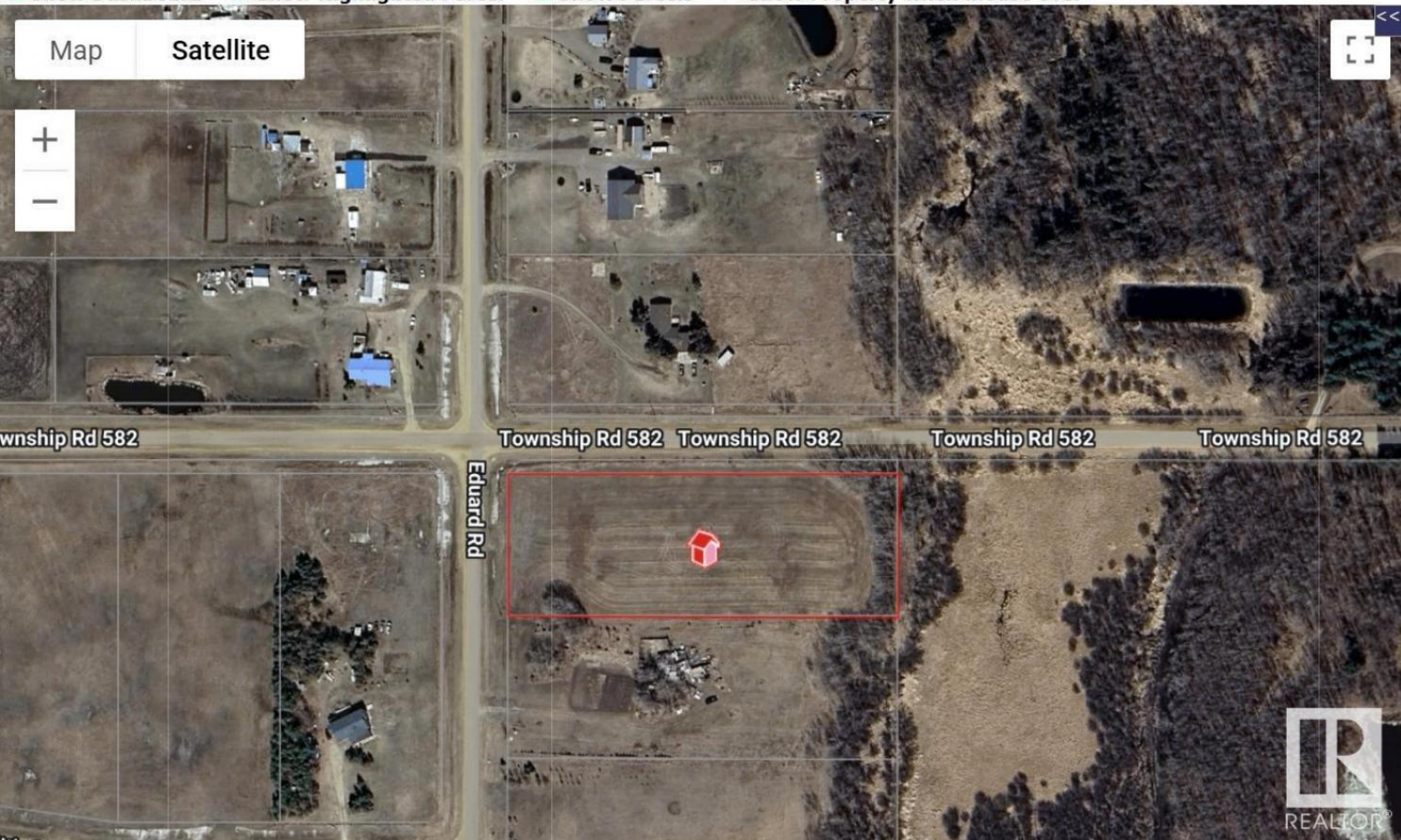


Property Address: 33 58121 Lily Lake Rd

☒ Show Dashboard ☒ Show Highlighted Parcel ☒ Show Parcels ☐ Show Property when mouse over



Rural Sturgeon County Alberta

\$89,900

Beautiful 3.02-Acre Corner Lot in Braun Village - Sturgeon County, Alberta Welcome to your opportunity to own a lovely 3.02-acre corner parcel in the peaceful community of Braun Village, located in scenic Sturgeon County. This raw, unspoiled land offers the perfect canvas for your dream homestead, hobby farm, workshop--or whatever your country-living vision may be. Surrounded by lush greenery and expansive skies, this property is ideal for families seeking space, freedom, and fresh air. Services are available at the road, making development simple and convenient. Whether you're looking to build a cozy country home or need room for animals, projects, or play, this lot checks all the boxes. Situated less than 1 km from the Opal Conservation Area, nature lovers will appreciate the quick access to trails, wildlife, and all the tranquility rural life has to offer. (id:6769)

Listing Presented By:



Originally Listed by:
Royal Lepage Premier Real Estate



RE/MAX River City

13120 St Albert Trail NW,
Edmonton, AB, T5L4P6

Phone: 780-982-1119
ahmadsai@remax.net