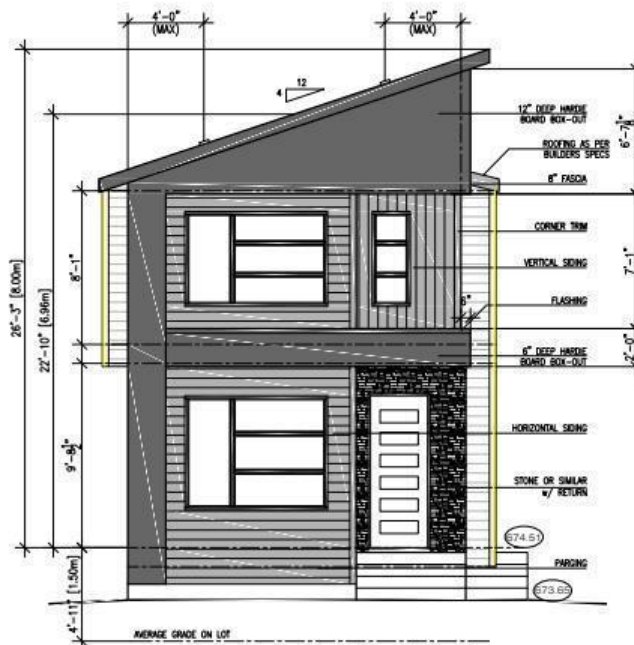


**REAR ELEVATION**  
SCALE: 3/16" = 1'-0"



**FRONT ELEVATION (LOT 22B)**  
SCALE: 3/16" = 1'-0"



## Edmonton Alberta

\$739,000

This beautiful infill home is located in the highly sought-after Pleasant View area, just a short distance from Southgate Mall. Its prime location offers easy access to all amenities, making it an ideal choice for convenience and lifestyle. This is a unique chance, with the opportunity to still customize your walls and flooring. The main floor features living and dining area, a spacious kitchen, a half bath, mudroom, foyer, and a deck - perfect for both entertaining and everyday living. Upstairs, you will find a master bedroom complete with a full ensuite bath and walk-in closet, along with two additional bedrooms and a full bathroom. The basement offers extra space with a bedroom, a full bathroom, and a large rec room. The home also includes a FULLY FINISHED LEGAL SUITE WITH SEPERATE ENTRANCE. The property has detached double garage. Every corner of the house has been thoughtfully designed to maximize space and functionality, windows fill the home with natural light. (id:6769)

Bedroom 4 Measurements not available  
Recreation room Measurements not available  
Living room Measurements not available  
Dining room Measurements not available  
Kitchen Measurements not available

Mud room Measurements not available  
Primary Bedroom Measurements not available  
Bedroom 2 Measurements not available  
Bedroom 3 Measurements not available

Listing Presented By:



Originally Listed by:  
Century 21 Smart Realty

<https://century21smart.ca/>



**RE/MAX River City**

13120 St Albert Trail NW,  
Edmonton, AB, T5L4P6

Phone: 780-982-1119  
ahmadsai@remax.net