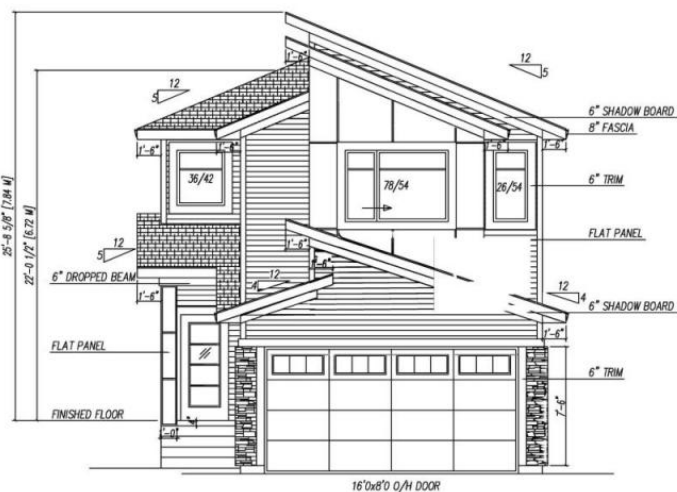
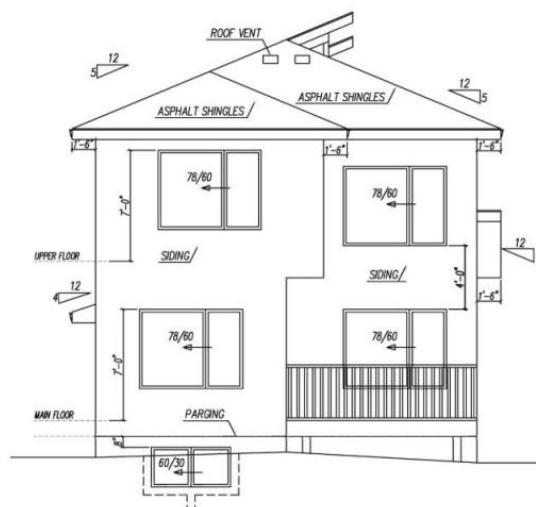


MODERN STYLE



FRONT ELEVATION



REAR ELEVATION

Stony Plain Alberta

\$549,000

Move in by Christmas! This beautiful 3-bed, 3-bath two-storey delivers over 1,850 sq ft of thoughtful design at an affordable price point. The open-to-above front entry makes a stunning first impression, while the main floor offers 9' ceilings, a private den, and a closed living room with an electric fireplace for cozy evenings. The kitchen is both stylish and functional with a quartz island, walk-through pantry complete with custom shelving and microwave outlet, and the chance to choose your own finishes and lighting. Upstairs you'll love the bonus room, two primary suites, spacious bedrooms with built-in organizers, and convenient laundry. Luxury vinyl plank runs throughout the main areas, adding durability and style. With a south-facing yard, double attached garage, and separate side entrance, this Silverstone home blends small-town charm, schools, and trails with easy city access. (id:6769)

Living room 14'6 x 14'
Dining room 11' x 10'
Kitchen 10'2 x 11'10
Den 10' x 8'

Family room 9'4 x 14'
Primary Bedroom 13'4 x 14'
Bedroom 2 9' x 10'6
Bedroom 3 10' x 12'

Listing Presented By:



Originally Listed by:
Century 21 Masters

<http://www.edmontonpropertiesforsale.com/>



RE/MAX River City

13120 St Albert Trail NW,
Edmonton, AB, T5L4P6

Phone: 780-982-1119
ahmadsai@remax.net