



St Albert Alberta

\$779,900

Spectacular Walkout Bungalow in Sought-After Inglewood! This beautifully renovated 2+2 bedroom, 2.5 bathroom home perfectly blends style and functionality. The kitchen is a chef's dream, featuring a side-by-side fridge/freezer, sleek stainless steel appliances, and gleaming granite countertops. The stunning primary suite offers a true retreat with a luxurious soaker tub, walk-in shower, dual sinks, and direct access to an impressive walk-in closet. The fully finished walkout basement is designed for entertaining, with a spacious rec room, cozy fireplace, bar area, two additional bedrooms, an office, and a versatile flex space. Step outside to your private, park-like yard with a tiered deck--perfect for gatherings or quiet evenings outdoors. With RV parking and an oversized garage, this incredible home truly has it all! (id:6769)

Den 3.65 m X 3.81 m

Bedroom 3 3.95 m X 3.57 m

Bedroom 4 3.19 m X 3.1 m

Recreation room 7.74 m X 4.64 m

Office 3.35 m X 3.85 m

Utility room 3.69 m X 4.59 m

Living room 5.86 m X 4.64 m

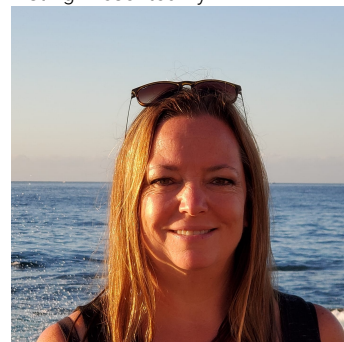
Dining room 2.05 m X 1.97 m

Kitchen 6.42 m X 4.78 m

Primary Bedroom 4.2 m X 4.91 m

Bedroom 2 3.81 m X 2.9 m

Listing Presented By:



Originally Listed by:
NOW Real Estate Group



RE/MAX River City

13120 St Albert Trail NW,
Edmonton, AB, T5L 4P6

Phone: 780-995-SOLD (7653)
homes4u@corinneoneil.com

The property information on this website is derived from the Canadian Real Estate Association's Data Distribution Facility (DDF®). DDF® references real estate listings held by various brokerage firms and franchisees. The accuracy of information is not guaranteed and should be independently verified. The trademarks REALTOR®, REALTORS® and the REALTOR® logo are controlled by The Canadian Real Estate Association (CREA) and identify real estate professionals who are members of CREA. The trademarks MLS®, Multiple Listing Service® and the associated logos are owned by CREA and identify the quality of services provided by real estate professionals who are members of CREA.