

# Edmonton Alberta

\$198,900

Welcome to RUTHERFORD VILLAGE. 2 BEDROOM 2 BATHROOM CONDO with UNDERGROUND parking. Great location close to all amenities. UPGRADED & UPDATED including paint, flooring, appliances & bathrooms. Open concept MAIN FLOOR UNIT featuring NEWER VINYL PLANK FLOORING, NEWER STAINLESS STEEL APPLIANCES, u-shaped kitchen with tons of counter space & eating area. Living room with sliding doors provides access to the CONCRETE COVERED PATIO. Generous PRIMARY BEDROOM with walk thru closet & a 4 pc. ensuite, a 2nd bedroom, 3 pc. main bathroom & in-suite stacked washer & dryer. 1 HEATED UNDERGROUND parking stall with STORAGE SPACE completes this unit. Shows great & move in ready! You won't be disappointed. (id:6769)

Living room 3.53 m X 3.02 m

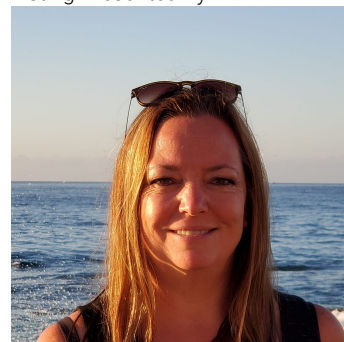
Dining room 2.4 m X 2.52 m

Kitchen 2.76 m X 3.45 m

Primary Bedroom 3.31 m X 4.64 m

Bedroom 2 4.14 m X 2.85 m

Listing Presented By:



Originally Listed by:  
RE/MAX Elite

<https://www.horsepowerranch.com/>



**RE/MAX River City**

13120 St Albert Trail NW,  
Edmonton, AB, T5L 4P6

Phone: 780-995-SOLD (7653)  
[homes4u@corinneoneil.com](mailto:homes4u@corinneoneil.com)