



## Sherwood Park Alberta

\$419,891

Brand New Home by Mattamy Homes in the master planned community of Hearthstone. This stunning WINDSOR corner unit townhome spans just over 1400sqft and offers 3 bedrooms and 2 1/2 baths. The open concept and inviting main floor features 8' ceilings and a half bath. The kitchen is a cook's paradise, with included kitchen appliances, quartz countertops, two-tone cabinets, waterline to fridge rough ins and an island perfect for entertaining. Head upstairs to discover the walk in laundry room, full 4 piece bath, and 3 bedrooms. The master is a true oasis, complete with a walk-in closet, luxurious ensuite and balcony! Enjoy the added benefits of this home with no condo fees, basement bathroom rough-ins and front yard landscaping. Enjoy access to amenities including a playground and close access to schools, shopping, commercial, and recreational facilities, sure to compliment your lifestyle! UNDER CONSTRUCTION! See first (4) photos for interior colors, rest are of the floor plan. (id:6769)

Living room Measurements not available

Dining room Measurements not available

Kitchen Measurements not available

Mud room Measurements not available

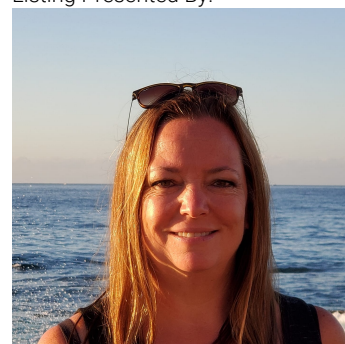
Primary Bedroom Measurements not available

Bedroom 2 Measurements not available

Bedroom 3 Measurements not available

Laundry room Measurements not available

Listing Presented By:



Originally Listed by:  
Mozaic Realty Group

<http://mozaicrealty.ca/>



**RE/MAX River City**

13120 St Albert Trail NW,  
Edmonton, AB, T5L 4P6

Phone: 780-995-SOLD (7653)  
[homes4u@corinneoneil.com](mailto:homes4u@corinneoneil.com)