

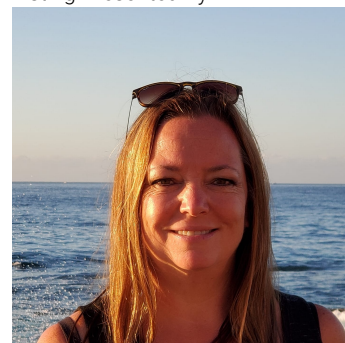


12228 118 Avenue Edmonton AB

\$0

FOR LEASE: HIGH-TRAFFIC RETAIL SPACE - Discover the perfect location for your business with this 2,015 sq. ft. retail store featuring 118 Avenue frontage and digital signage for unbeatable visibility and advertising potential. Surrounded by thriving businesses like McDonald's, St. John Ambulance, a bustling daycare, and a popular Pizza & Donair shop, this space guarantees steady foot traffic and a loyal customer base. Designed for versatility, it's ideal for retail, service businesses, or community use, with ample rear and street parking ensuring seamless convenience for tenants and visitors alike. Strategically located just minutes from the vibrant 124 Street district, the rapidly growing Blatchford development, and downtown Edmonton, this space positions your business for success in a booming area. Opportunities like this are rare and highly sought after-- secure your spot today and watch your business thrive!

Listing Presented By:



Originally Listed by:
Exp Realty

yovel@live.ca
<https://www.buyfaster.ca/>



RE/MAX River City

13120 St Albert Trail NW,
Edmonton, AB, T5L 4P6

Phone: 780-995-SOLD (7653)
homes4u@corinneoneil.com