



Rural Parkland County Alberta

\$89,900

This 3 bedroom, 2 bath 2007 home is located in one of the newer sections of the park, just steps away from the lake area and all of the walking paths. Has an extra large parking pad and access to not one, but two visitor parking lots very close by. Lots of little extras like a skylight, a garborator, large deck, exterior gas hook up, and shed included. Parkland Village is a thriving community with many amenities like a community hall and events, multiple parks, 2 man-made lakes, elementary school, convenience store, restaurant, sports fields, and a community firehall. Located in a rural setting, but just a minute's drive to Spruce Grove or Yellowhead Highway so you have all of the amenities and short commute times, while also enjoying that peaceful country lifestyle. (id:6769)

Living room Measurements not available

Dining room Measurements not available

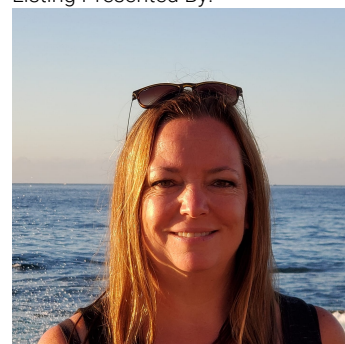
Kitchen Measurements not available

Primary Bedroom Measurements not available

Bedroom 2 Measurements not available

Bedroom 3 Measurements not available

Listing Presented By:



Originally Listed by:
RE/MAX PREFERRED CHOICE



RE/MAX River City

13120 St Albert Trail NW,
Edmonton, AB, T5L 4P6

Phone: 780-995-SOLD (7653)
homes4u@corinneoneil.com