



## Edmonton Alberta

\$249,900

Welcome to Summerlea Court, ideally situated just minutes away from WEM, schools, and various amenities, with convenient access to the A. Henday. CONDO FEE includes HEAT & WATER! This well-maintained 3 bedroom condo offers 1,060 sqft. of living space + a fully finished basement that includes a brand new washer and dryer, family room and additional storage under the stairs and a den. The main floor features attractive laminate flooring and a well-equipped kitchen with ample storage, a new refrigerator, and a dishwasher. The living room is notably spacious, benefiting from abundant natural light that enhances the overall layout. A patio door leads to a private backyard, complete with a spacious deck and a handcrafted shed. Additionally, a convenient half bathroom is located on this level. Upstairs, you will find a full bathroom and three generously sized bedrooms, each with organizer closets, including one that boasts a distinctive skylight. Unit faces residential street, lots of parking. (id:6769)

Recreation room Measurements not available

Living room 5.27 m X 3.37 m

Dining room 2.43 m X 1.81 m

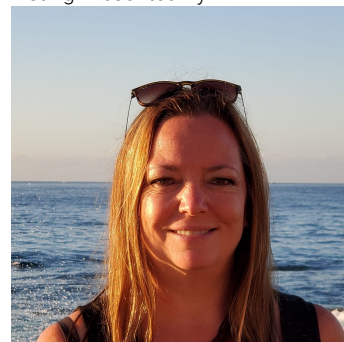
Kitchen 3.4 m X 2.43 m

Primary Bedroom 3.99 m X 3.17 m

Bedroom 2 2.87 m X 2.65 m

Bedroom 3 2.9 m X 3.38 m

Listing Presented By:



Originally Listed by:  
RE/MAX River City

<http://www.loidahomes.ca/>



**RE/MAX River City**

13120 St Albert Trail NW,  
Edmonton, AB, T5L 4P6

Phone: 780-995-SOLD (7653)  
homes4u@corinneoneil.com