



## Edmonton Alberta

\$324,900

Set on a quiet, low-traffic street, this updated home offers a fantastic opportunity for first-time buyers, growing families, or anyone seeking an affordable, turnkey property in a welcoming neighbourhood. Enjoy a large, fully fenced backyard ideal for entertaining, along with central air conditioning for year-round comfort. This home has been extensively refreshed with new shingles, fresh paint, durable LVP flooring, upgraded lighting, modern tile, updated vanities, and a stylish new fireplace that brings warmth and character to the living area. The kitchen and dining space are bright, functional, and inviting—perfect for everyday living. Upstairs, the bedrooms and bathrooms have been thoughtfully updated and are ready to enjoy from day one. Conveniently located close to schools, public transit, and Mill Woods Town Centre, with quick access to the Whitemud for easy commuting. (id:6769)

Living room 3.44 m X 5.27 m

Dining room 2.76 m X 3.08 m

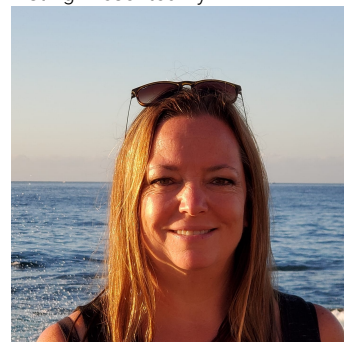
Kitchen 2.62 m X 2.11 m

Primary Bedroom 3.06 m X 5.27 m

Bedroom 2 3.46 m X 2.72 m

Bedroom 3 4.1 m X 2.45 m

Listing Presented By:



Originally Listed by:  
Real Broker

<http://www.houseofrealestate.ca/>



**RE/MAX River City**

13120 St Albert Trail NW,  
Edmonton, AB, T5L 4P6

Phone: 780-995-SOLD (7653)  
[homes4u@corinneoneil.com](mailto:homes4u@corinneoneil.com)

The property information on this website is derived from the Canadian Real Estate Association's Data Distribution Facility (DDF®). DDF® references real estate listings held by various brokerage firms and franchisees. The accuracy of information is not guaranteed and should be independently verified. The trademarks REALTOR®, REALTORS® and the REALTOR® logo are controlled by The Canadian Real Estate Association (CREA) and identify real estate professionals who are members of CREA. The trademarks MLS®, Multiple Listing Service® and the associated logos are owned by CREA and identify the quality of services provided by real estate professionals who are members of CREA.