



Leduc Alberta

\$398,000

Discover this charming 1,162 sq ft bungalow in the heart of Leduc! Located in a prime location across from schools the family friendly community of Linsford Park boasts this extra large lot features 4 bedrooms, 3 full bathrooms, two kitchens, and an oversized garage. Immediately walk in to a spacious living room with large windows that fill the space with natural light. The kitchen offers plenty of white cabinetry, ample counter space, and stainless steel appliances—perfect for everyday cooking and entertaining. The dining area opens onto a deck, ideal for enjoying summer evenings. The primary bedroom includes a private 3-piece ensuite, complemented by an additional bedroom and a 4-piece bathroom. Head to the fully finished basement that has a separate entrance and a second full kitchen along with two additional bedrooms. Outside, you'll find the oversized garage (220V), a fully fenced yard and a generous deck—perfect for relaxing or hosting guests. Don't miss out on this perfect family friendly home! (id:6769)

Bedroom 3 Measurements not available

Bedroom 4 Measurements not available

Living room 4.97m x 5.19m

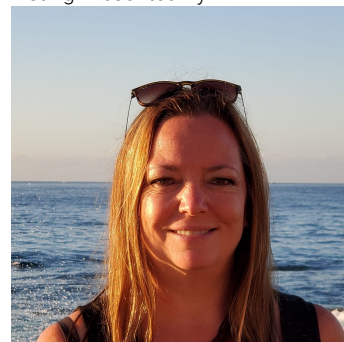
Dining room 2.33m x 5.81m

Kitchen 2.98m x 5.70m

Primary Bedroom 3.18m x 5.87m

Bedroom 2 2.78m x 3.43m

Listing Presented By:



Originally Listed by:
Exp Realty

<https://sweetly.ca/sweetly-real-estate-listings>



RE/MAX River City

13120 St Albert Trail NW,
Edmonton, AB, T5L 4P6

Phone: 780-995-SOLD (7653)
homes4u@corinneoneil.com