

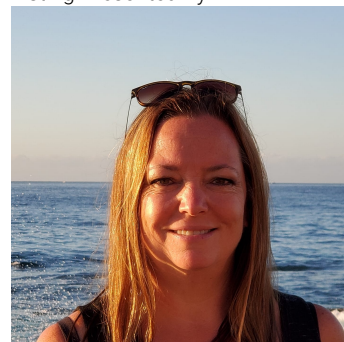


Rural Athabasca County Alberta

\$114,900

BOYLE ACREAGE FOR SALE - 2.97 ACRES! Located just a few minutes west of Boyle, here in the 'Lake Country Estates' subdivision. 32x16 garage could be used as a cabin maybe, with a large deck to park an RV next to, and enjoy the sunsets. Included is a storage shed, metal seacan, sewer and water totes, and last but not least, a zero-turn lawnmower. There is a gravel driveway in, and there is underground power to a power box for RV hookup and plugins. Both garage and shed are wired-in for power. Just a few minutes drive to Boyle for all your amenities, and Skeleton Lake is only 10 minutes away, plus several other nearby lakes to enjoy.. here in lake country. You could just use this during the warmer months, but this lot IS on the k-12 school bus route, so it is great for growing families. Just enjoy for the summer and fall, or build your dream just a few minutes west of town. Don't miss out! (id:6769)

Listing Presented By:



Originally Listed by:
Local Real Estate

<https://www.realtybykatie.com/>



RE/MAX River City

13120 St Albert Trail NW,
Edmonton, AB, T5L 4P6

Phone: 780-995-SOLD (7653)
homes4u@corinneoneil.com