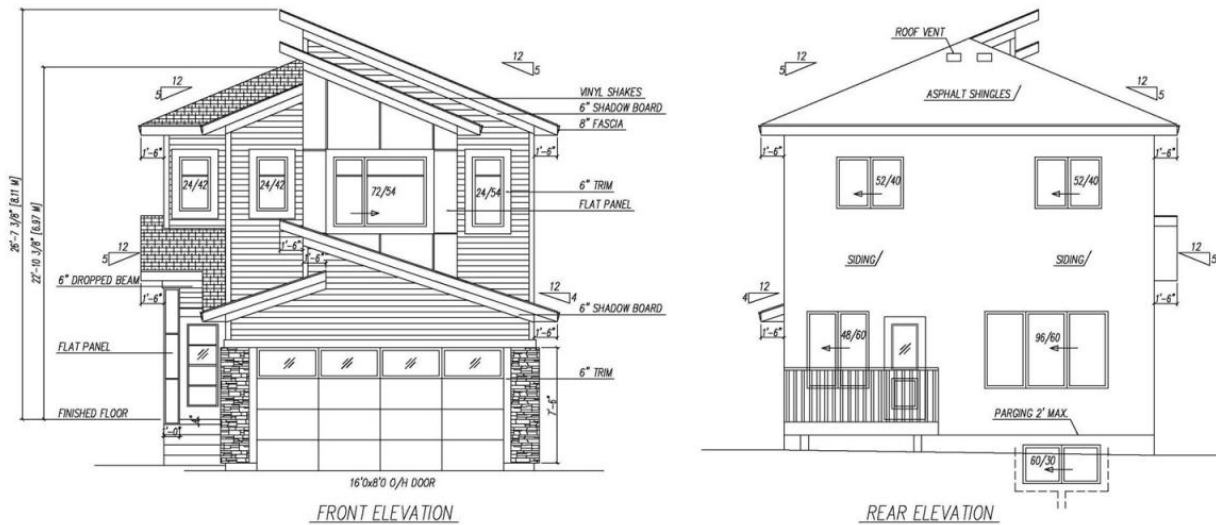


MODERN STYLE



Stony Plain Alberta

\$529,900

Incredible time to get involved in the building process and have a say in the final interior design choices! This 3 Bed two story home will be ready for it's new owner start of July! South facing yard, double attached garage, walk through pantry, wooden closet organizers, even 9' ceilings on all floors. Sidhu Homes is a LUXURY builder specializing in high end custom homes and is now offering entry level family homes maintaining the high end specification!! Granite or quartz countertops, electric fireplace, large bedrooms, and two primary suites! The charming community of Silverstone has the amenities of the big city as well as fantastic trails and small town feel. This models spec is 2007 square feet , has upstairs laundry, main floor Den, Bonus Room, W/I Closet, separate exterior entrance, soaring 18' reveal at entry, and the opportunity to individualize the interior paint/material. Our team is happy to work with you to make sure it's your perfect HOME! (id:6769)

Living room 13' x 13'
Dining room 10' x 11'
Kitchen 9'6" x 10'6"
Den 9'8" x 8'0"

Family room 10'8 x 13'

Primary Bedroom 14' x 14'4

Bedroom 2 Measurements not available x 11 m

Bedroom 3 Measurements not available x 11 m

Listing Presented By:



Originally Listed by:
Century 21 Masters

<http://www.edmontonpropertiesforsale.com/>



RE/MAX River City

13120 St Albert Trail NW,
Edmonton, AB, T5L 4P6

Phone: 780-995-SOLD (7653)
homes4u@corinneoneil.com