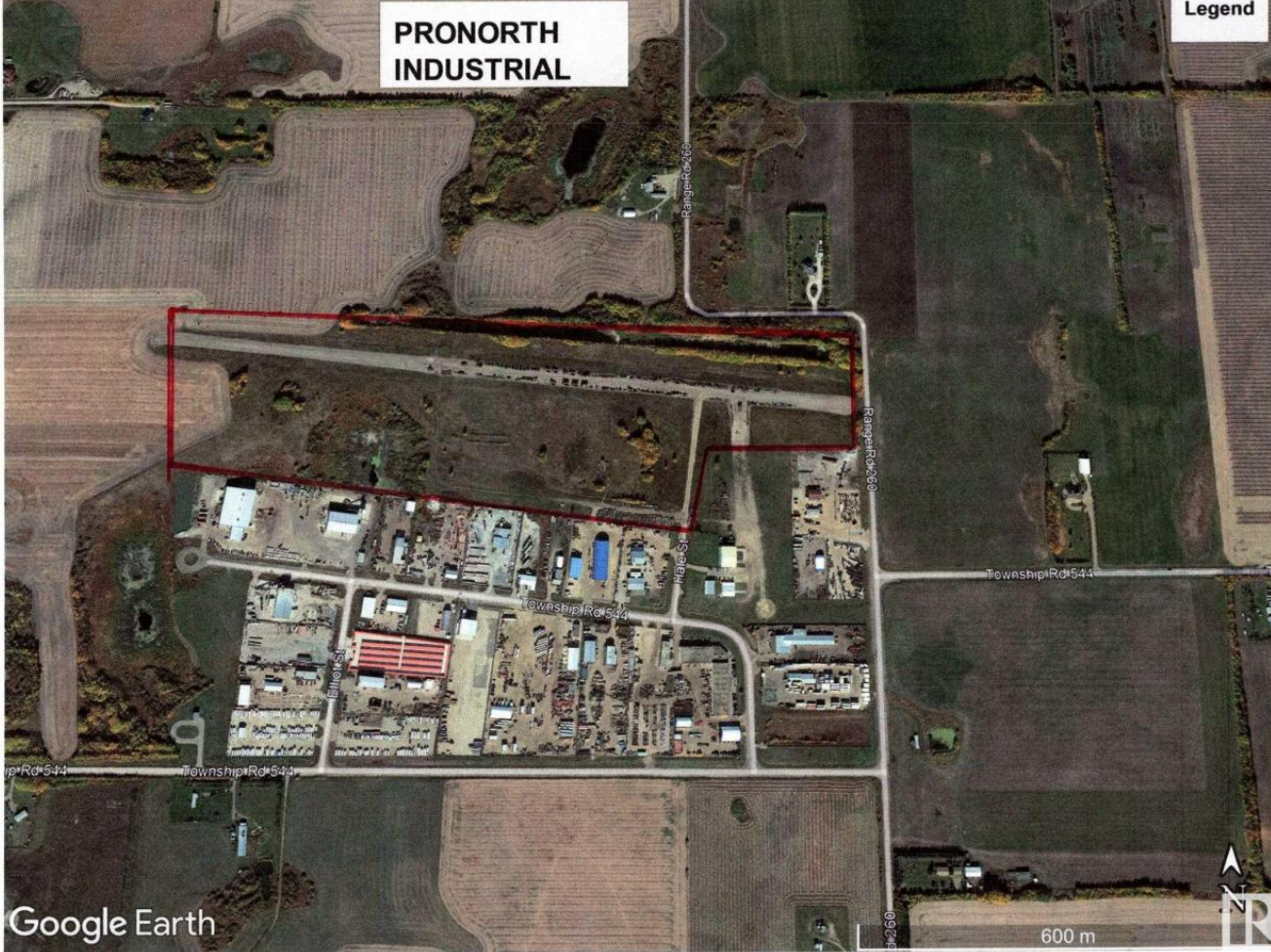


**PRONORTH
INDUSTRIAL**

Legend



RR 260 TWP Rd 544 Rural Sturgeon County AB

\$7,325,000

An extension to the existing PRO-NORTH Industrial Park. This 78.30 acre parcel is an excellent opportunity for future subdivision of Medium Industrial lots and or subdivide to an owner-user for larger lots. The parcel has been approved by Sturgeon County for subdivision. it is currently zoned as Medium Industrial un-serviced. There are options for services to each of the subdivide lots. Access is direct via TWP Rd 544 to Highway 2 and Range Road 260 to Highway 37 and Villeneuve Rd Hwy 633. Only 10 minutes from north St. Albert on paved roads, 3 K north of Costco and 4 K west. Go to realtor's website for further information.

Listing Presented By:



Originally Listed by:
Fraser-Tradex Realty Inc

glstebner@gmail.com

RE/MAX ELITE

RE/MAX Elite

304 Windermere Road, Edmonton,
AB, T6W 2Z8

Phone: 780-406-4000

Fax:

jmattie@telusplanet.net