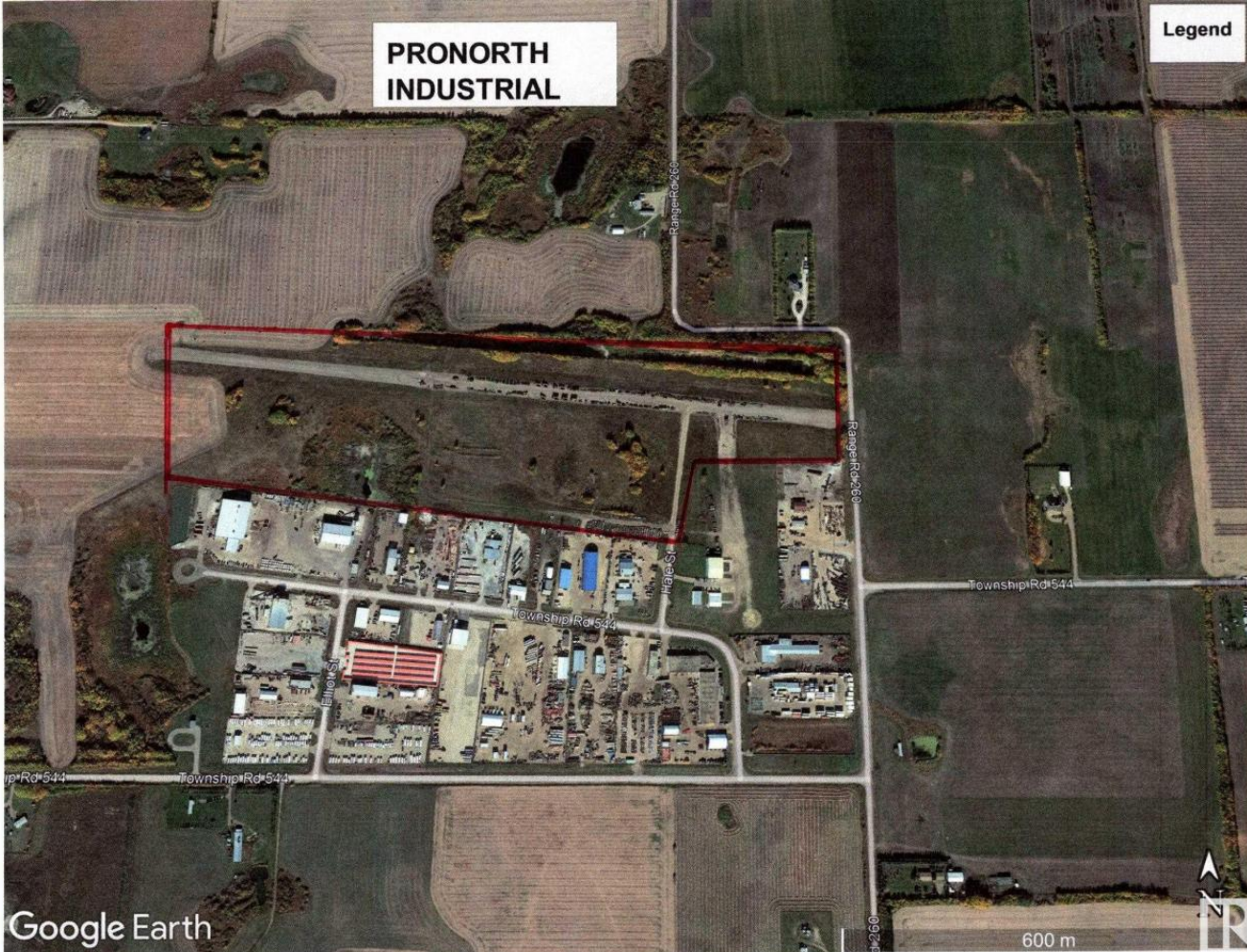


**PRONORTH  
INDUSTRIAL**

**Legend**



## RR260 TWP RD 544 Rural Sturgeon County AB

\$7,325,000

An extension to the existing PRO-NORTH Industrial Park. This 78.30 acre parcel is an excellent opportunity for a future subdivision of lots. It is currently zoned Medium Industrial lots or subdivide for owner-user for a mix or larger and smaller lots. The parcel has been approved by Sturgeon County for subdivision. It is currently zone IM un-serviced. There are options for servicing each of the subdividable lots. Access is direct via TWP 544 to Highway 2 and Range Road 260 to highway 37 and Villeneuve Road. Only 10 minutes St. Albert, 3 K north of Costco and 4 K west. Go to realtor's website for more details information and print out.

Listing Presented By:



Originally Listed by:  
Fraser-Tradex Realty Inc

[hughfraser10@gmail.com](mailto:hughfraser10@gmail.com)

**RE/MAX ELITE**

**RE/MAX Elite**

304 Windermere Road, Edmonton,  
AB, T6W 2Z8

Phone: 780-406-4000

Fax:

[jmattie@telusplanet.net](mailto:jmattie@telusplanet.net)