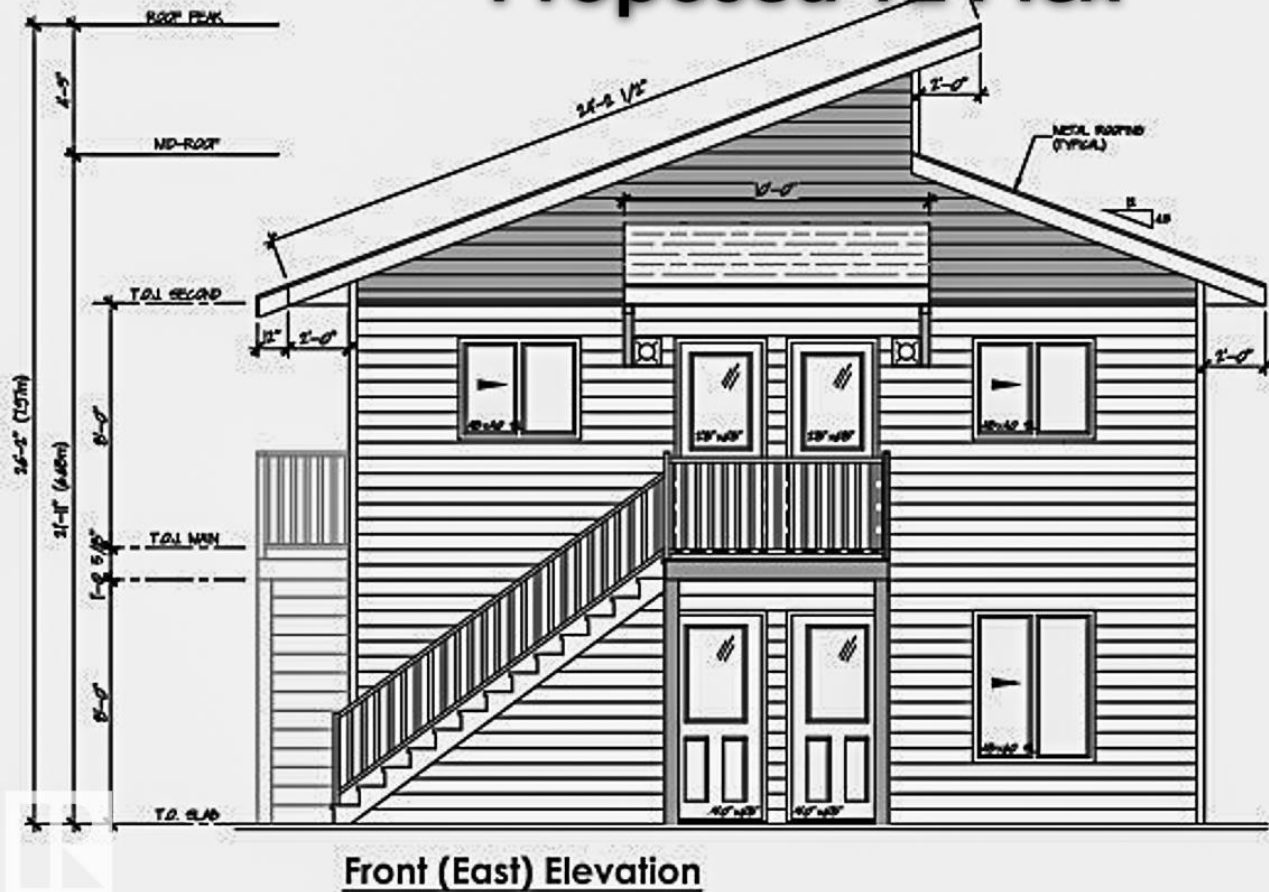


# Proposed 12 Plex



Edmonton Alberta

\$298,800

Development Opportunity! Location will be ONE BLOCK AWAY from proposed NEW LRT Station. Proposed 12 Plex in the process of receiving a permit. Located on a 49.6' x 120' Lot zoned for 2.40 RM - Medium Scale Residential Zone. Purchase INCLUDES all drawings, surveys, development permit (expected to be granted by mid December), and quote to build. (id:6769)

Listing Presented By:



Originally Listed by:  
MaxWell Progressive

<http://www.petersellshomes.ca/>

**RE/MAX ELITE**

**RE/MAX Elite**

Phone: 780-406-4000

Fax:

[executive@eliterealestate.ca](mailto:executive@eliterealestate.ca)

The property information on this website is derived from the Canadian Real Estate Association's Data Distribution Facility (DDF®). DDF® references real estate listings held by various brokerage firms and franchisees. The accuracy of information is not guaranteed and should be independently verified. The trademarks REALTOR®, REALTORS® and the REALTOR® logo are controlled by The Canadian Real Estate Association (CREA) and identify real estate professionals who are members of CREA. The trademarks MLS®, Multiple Listing Service® and the associated logos are owned by CREA and identify the quality of services provided by real estate professionals who are members of CREA.