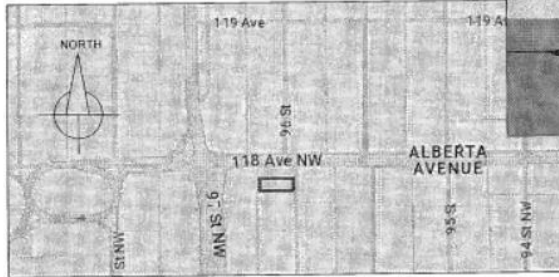
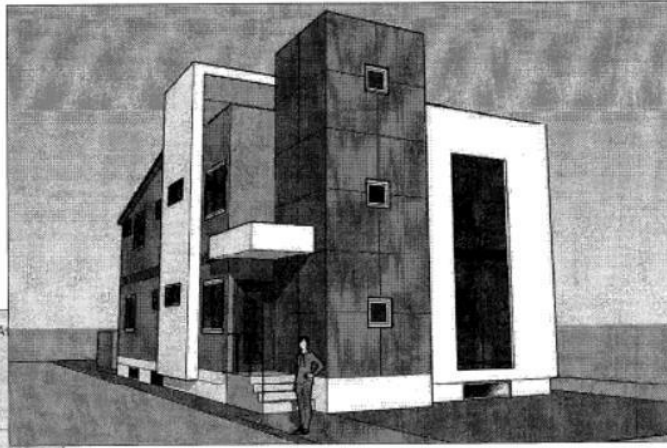


PROJECT  
**TEKLE BUILDING**

- 1- FRONT PAGE
- 2- LOT SIZE
- 3- FOUNDATION
- 4- BASEMENT FLOOR
- 5- MAIN FLOOR
- 6- SECOND FLOOR
- 7- THIRD FLOOR
- 8- FRONT ELEVATION
- 9- LEFT ELEVATION
- 10- RIGHT ELEVATION
- 11- REAR ELEVATION
- 12- SECTION A-A'
- 13- 3D IMAGES



LOT ADDRESS:  
11742 96 ST NW  
EDMONTON, AB  
T5G1V2

1

FRONT PAGE

## Edmonton Alberta

\$219,900

Incredible opportunity to design & develop a great commercial property, 3960SqFt on a 33x120 Zoned MU mixed use commercial residential. Just minutes to downtown, NAIT and excellent exposure off 118 Ave and 97 Street. Plenty of parking out front & rear lane access for lot (id:6769)

Listing Presented By:



Originally Listed by:  
REMAX River City

**REMAX Elite**  
*the place to be*

**REMAX ELITE**

8104 160 Ave NW, Edmonton, AB,  
T5Z 3J8

Phone: 780-406-4000

Fax:

broker@eliterealestate.ca

The property information on this website is derived from the Canadian Real Estate Association's Data Distribution Facility (DDF®). DDF® references real estate listings held by various brokerage firms and franchisees. The accuracy of information is not guaranteed and should be independently verified. The trademarks REALTOR®, REALTORS® and the REALTOR® logo are controlled by The Canadian Real Estate Association (CREA) and identify real estate professionals who are members of CREA. The trademarks MLS®, Multiple Listing Service® and the associated logos are owned by CREA and identify the quality of services provided by real estate professionals who are members of CREA.