

# TENTATIVE PLAN

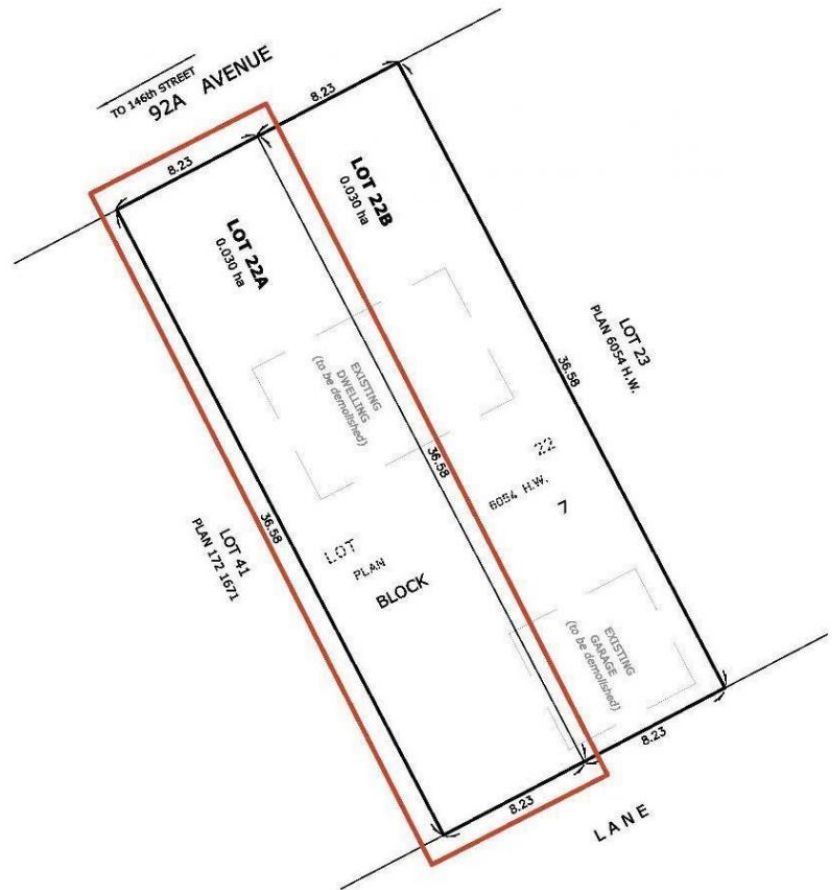
SHOWING SUBDIVISION OF

**LOT 22, BLK.7, PLAN 6054 H.W.**

IN THE

**N.E.1/4 SEC.26 AND S.E.1/4 SEC.35,  
TWP.52, RGE.24, W. 4M.**

**EDMONTON, ALBERTA**



## NOTES:

- DISTANCES ARE APPROXIMATE AND ARE IN METRES AND DECIMALS THEREOF.
- AREA DEALT WITH BOUNDED THUS.



**HAGEN  
SURVEYS**

2107 - 87th Avenue N.W. | Edmonton AB, T6P 1L5 | T 780.464.5506 | F 780.464.4450 | hagensurveys.ca  
Your comprehensive surveying partner.

SURVEYOR'S STAMP



CALCULATED BY:	E.S.D.	DRAWN BY:	E.S.D.
DATE:	JUNE 19, 2025	REVISED:	--
DRAWING	250664T	FILE NO.	250664

## Edmonton Alberta

\$360,000

Visit the Listing Brokerage (and/or listing REALTOR(R)) website to obtain additional information. An exceptional opportunity to secure a vacant, subdivided lot in a prime Edmonton location. Demolition has already been completed, offering a clean, build-ready site (pending permit approval). This vacant 27 ft frontage by 120 ft deep lot is just minutes from the river valley and downtown, while also providing easy access to Whitemud Drive and Anthony Henday Drive. Situated near excellent schools, coffee shops, restaurants, parks, and the newly opened LOCA grocery store. This property is ideal for builders, investors, or buyers looking to create a custom infill home in a highly desirable neighbourhood. (id:6769)

Listing Presented By:



Originally Listed by:  
HonestDoor Inc

<https://www.honestdoor.com/>

**REMAX Elite**

### REMAX ELITE

8104 160 Ave NW, Edmonton, AB,  
T5Z 3J8

Phone: 780-406-4000

Fax:

[broker@eliterealestate.ca](mailto:broker@eliterealestate.ca)

The property information on this website is derived from the Canadian Real Estate Association's Data Distribution Facility (DDF®). DDF® references real estate listings held by various brokerage firms and franchisees. The accuracy of information is not guaranteed and should be independently verified. The trademarks REALTOR®, REALTORS® and the REALTOR® logo are controlled by The Canadian Real Estate Association (CREA) and identify real estate professionals who are members of CREA. The trademarks MLS®, Multiple Listing Service® and the associated logos are owned by CREA and identify the quality of services provided by real estate professionals who are members of CREA.