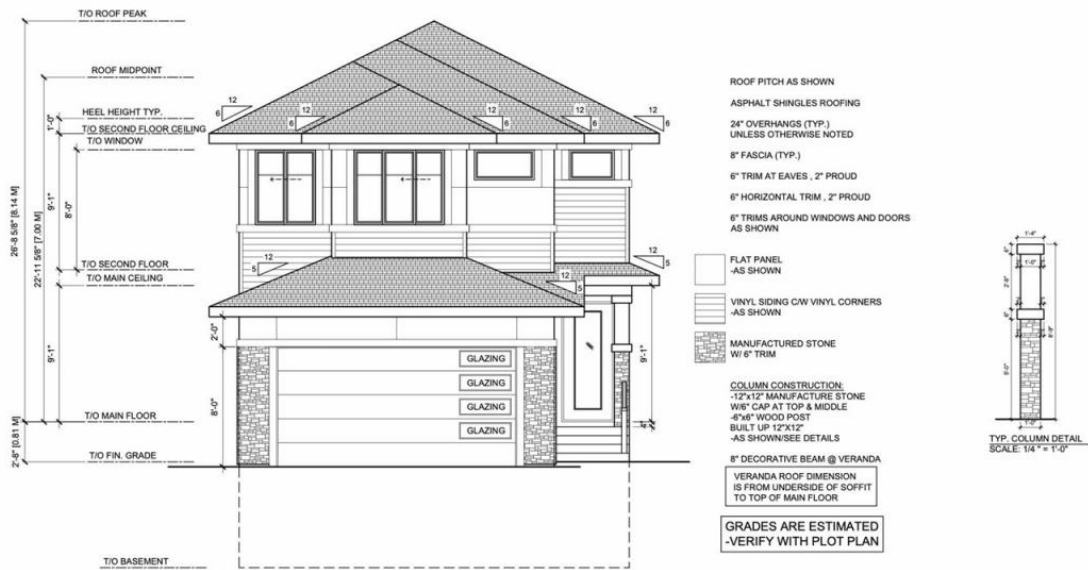


"PURCHASE OF THIS DRAWING STRICTLY GRANTS YOU THE PERMISSION TO CONSTRUCT THIS HOUSE ONLY AT THE ADDRESS IT IS SPECIFIED FOR. IT IS STRICTLY PROHIBITED TO REPLICATE, DUPLICATE, OR REUSE THE DRAWING FOR ANY OTHER PROPERTIES, INCLUDING ADDITIONAL ONES THAT MAY BE SIMILAR. ANY REPRODUCTION OF THIS DRAWING FOR THE ADDRESS IT WAS NOT INTENDED FOR IS A COPYRIGHT INFRINGEMENT."



# Edmonton Alberta

\$775,000

UNDER CONSTRUCTION. Experience luxury living in this 2400 sq. ft. home located in the desirable community of Cavanagh, backing onto a scenic creek and ravine for stunning year-round views. This home features a walkout basement with side entry and a thoughtfully designed spice kitchen to complement the main gourmet kitchen, perfect for everyday cooking and entertaining. The interior boasts a beautiful blend of tile, vinyl, and carpet flooring for a modern yet inviting feel. Upstairs, the amazing primary suite includes a luxurious ensuite bathroom and a spacious walk-in closet, providing a perfect private retreat. With 3 bedrooms and 3 bathrooms, an open-concept layout, and high-quality finishes, this home offers both comfort and style. Surrounded by natural beauty and located in a sought after neighbourhood, it's the perfect combination of elegance and function. (id:6769)

Bedroom 4 Measurements not available  
 Primary Bedroom Measurements not available  
 Bedroom 2 Measurements not available  
 Bedroom 3 Measurements not available

Listing Presented By:



Originally Listed by:  
 MaxWell Polaris

**RE/MAX ELITE**

RE/MAX Elite

Phone: 780-406-4000  
 Fax:  
 executive@eliterealestate.ca